



Lot 6 (Poll)



MAGS

Monty Atkinson Genetic Sale

146 QUALITY BULLS INC. 140 POLL/SCURR



Lot 13 (Poll)

- Mungalla
- Valley

- Lamont
- Durack

10am Friday 10th NOVEMBER 2017

Dalrymple Saleyards
Charters Towers
North Queensland



Lot 107 (Poll)

Introducing
ONLINE **LIVE**
SALE **VIEWING & SALE BIDDING**
AVAILABILITY

www.magsdroughtmasters.com.au

MAGS Matters

ROLL OF HONOUR 2017

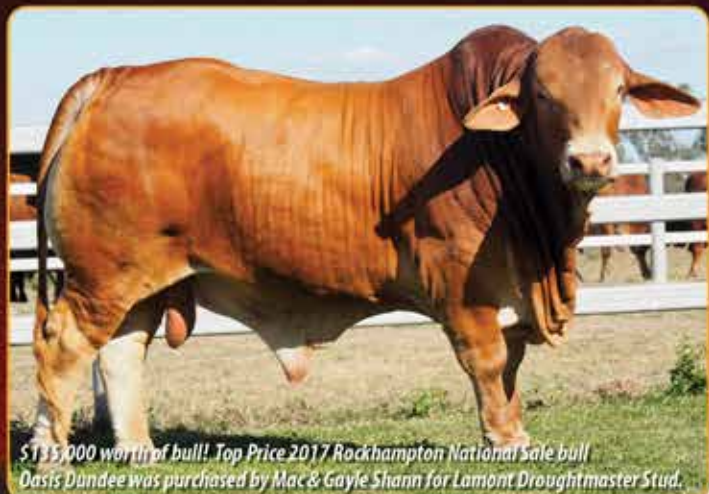
CLERMONT SHOW

Mac & Gayle Shann, Lamont Droughtmasters

- Most Successful Beef & Commercial Cattle Exhibitor 2017
- Most Successful Beef Cattle Exhibitor 2017
- Champion Grain Fed Heifer
- Champion Grass Fed Pen
- WINNER of 7 Classes:
 - Single Grain Fed Local Trade Steer;
 - Pair of Grain Fed Jap Steers;
 - Single Grain Fed Jap Heifer;
 - Single Grain Fed Local Trade Heifer;
 - Pair of Grain Fed Local Trade Heifers;
 - Single Grass Fed 2 tooth Heifer;
 - Pen of 5 Heifers – no more than 4 teeth
- PLUS 12 other placings



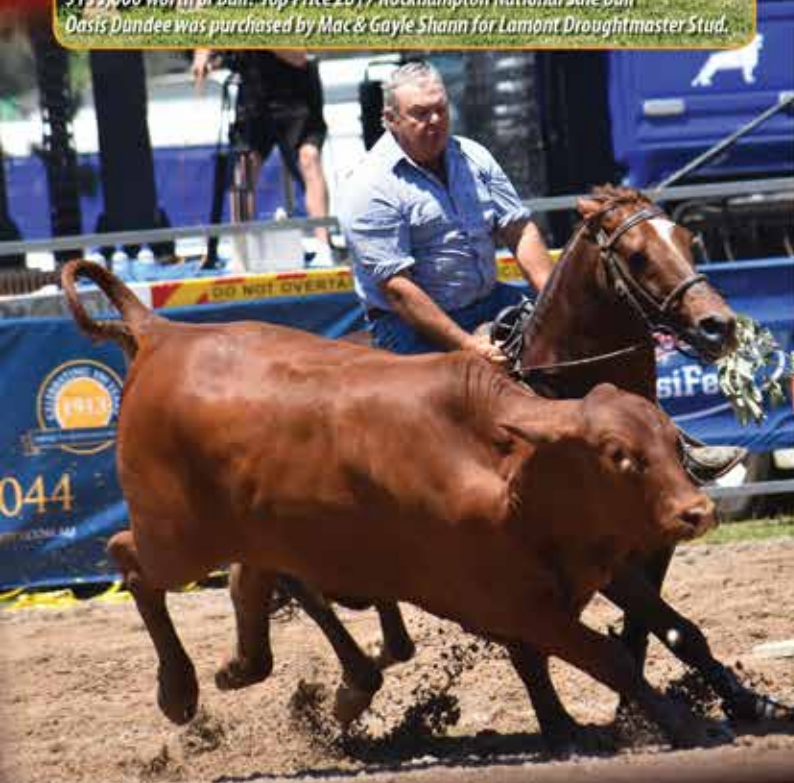
Recently Alison Atkinson (3rd from left), Durack Stud was awarded Honorary Life Membership of the Droughtmaster Stud Breeders' Society for her many years of support and service to the Droughtmaster Breed. After the presentation she was congratulated by daughters Sherri Philp, Gayle Shann & Kylie Graham.



\$135,000 worth of bull! Top Price 2017 Rockhampton National Sale bull Oasis Dandee was purchased by Mac & Gayle Shann for Lamont Droughtmaster Stud.



SC Leeroy will head to Mungalla Stud after Kylie Graham and Mat Durkin outbid \$60,000 for him at the 2017 National Sale.



By-Mingo Prince was purchased by Hugh & Sherri Philp at this year's National Droughtmaster Sale for their Valley Stud

Lloyd Brown on Mallanganee Sampson putting a quality Lamont Droughtmaster steer around the course in fine style winning the 2017 Warwick Gold Cup. Photo credit: Katie Rutledge.

MAGS



Our Best Offering Ever!

DALRYMPLE SALEYARDS ~ CHARTERS TOWERS
10am Friday 10th NOVEMBER 2017

on account of

Mungalla, Valley, Lamont & Durack Studs

146 QUALITY BULLS

comprising

- **66 Droughtmaster Registered Sires**
- **80 Herd Bulls** (inc 8 Charolais X Droughtmaster Bulls)

Sale includes **140 POLL or SCURR Bulls**

Sale Vendors

LAMONT STUD – Mac & Gayle Shann
'Cantaur Park', Clermont 07-4983 5246 0407-835246

MUNGALLA STUD – Kylie Graham & Mat Durkin
'Farnham', Taroom 07-4627 8145 0409-040030

VALLEY STUD – Hugh & Sherri Philp
'Wyena', Clermont 07-4983 5022 0428-835577

DURACK STUD – Alison Atkinson
Frenchville, Rockhampton 07-4926 5885 0419-756303
and Alan Atkinson

Introducing

LIVE AUCTION
ONLINE SALE VIEWING
ONLINE SALE BIDDING



W.A. ELIGIBLE
Refer Page 3

Agents



CHARTERS TOWERS 07-4787 4000
JIM GEANEY 0429-874000
MATTHEW GEANEY 0418-777817
TROY WILLIAMS 0400-917927



ROCKHAMPTON 07-4922 6311
KEN MCCAFFREY
A/HRS 07-4922 4613
MOBILE 0418-792770

MAGS

No. 1 in the North!



HEALTH

All bulls in this Sale have:

- passed crushside Veterinary Semen Testing;
- been vaccinated for 3 Day Sickness and with 7 in 1 vaccine;
- been blooded with 3 Germ Blood;
- undergone pre-Sale tick treatments to allow immediate Clearing Dip inspection for entry into tick-free areas.

In addition All Registered Bulls as well as Mungalla and Valley herd bulls

- have undergone Semen Morphology testing.

PRE-SALE SUPPLEMENTARY SHEET BULL INFORMATION

A Supplementary Sheet detailing the weights, dentition, carcass scans and fertility data of all Sale Bulls will be available from Monday 6th November. It will be posted on the Sale website www.magsdroughtmasters.com.au. However please contact the Sale Agents and they can arrange to email or fax you these details direct if required.

PHOTOS

Photos of Sale bulls are printed in this catalogue for your viewing. **Further photos of Sale bulls will be updated on the Sale website www.magsdroughtmasters.com.au until Sale day.**

INSPECTION

Vendors welcome pre-Sale inspection of their Sale lots at 'Cantaur Park', Clermont (Lamont), 'Wyena', Clermont (Valley) and 'Farnham', Taroom (Mungalla) at any time. They are also happy to assist prior to the Sale, should you require any further information on individual lots.

All bulls will be penned and available for inspection at Dalrymple Saleyards, Charters Towers from 1pm on Thursday 9th November. This inspection will then be followed at 6:30pm by the MAGS 16th Sale Dinner at the Charters Towers Civic Club.

ACCOMMODATION

Sale Visitors requiring accommodation in Charters Towers should contact Geaney's office 07-47874 000 and they can make suitable accommodation bookings for you.

DELIVERY

Vendors and Sale Agents will undertake to co-ordinate the most safe and cost effective delivery of Lots for all purchasers. Please complete your Buyer's Instruction Sheet fully and hand it to the Sale office when you have completed your purchasing.

INSURANCE

We recommend that Bull Buyers today insure their purchases from this Sale immediately from the "Fall of the Hammer". Cover ranging from Transit and 30 Days Mortality to full 12 months comprehensive cover can be arranged immediately with our insurance representative at the Sale today.

MAGS

No. 1 in the North!



INTRODUCING SALE VIEWING & BIDDING – LIVE ONLINE



Whether you are at the MAGS Auction Sale at Dalrymple Saleyards in person, or anywhere else in the World, you can participate in the Sale LIVE ONLINE. From your desktop computer, laptop, tablet or smartphone your access to LIVE VIEWING and LIVE BIDDING is simple, safe and easy to use. See Page 5 for an 'easy to follow', step by step process to participate on Elite Livestock Auctions' proven platform.

All Welcome

MAGS SALE DINNER
Thursday Night 9th November
Charters Towers Civic Club

Sale Visitors – We, and our Agents, are pleased to host you for Dinner the night before Sale Day.
Just roll up from 6:30pm.

We suggest you come to Charters Towers on Thursday afternoon, inspect the Sale team and join us at the MAGS Sale Dinner.

MAGS VOLUME BUYERS BULL REBATE

Individual Buyers Purchasing:

- 6 to 10 bulls receive a Rebate of
\$110* per bull *inc gst.
- 11 bulls and over receive a Rebate of

\$110* per bull (1st 10 bulls) then **\$165* per bull** (11th bull onwards). *inc gst.

It doesn't matter if you live next door to the Dalrymple Saleyards or further afield, the significant MAGS Volume Buyers Rebate commences when you buy your 6th bull and grows with further purchases.

APPRECIATION TO SALE SPONSORS

We gratefully acknowledge the support towards the MAGS 2017 Sale shown by our Sponsors – Barry Williams & Team, **Rural Supplements**; John Bourke and the Agribusiness Team of **Westpac**, David & Maree Pett of **Hillross Financial Advisors**, Mackay; the Team from **PVW Partners Accountants & Advisors**, Townsville and Ron Fitton & Team of **Fitton Insurance Brokers** Australia Pty Ltd, Toowoomba.

Thanks also to **Geaney's** and **McCaffrey's Australian Livestock Marketing** for joining with us in sharing the hosting of our Annual MAGS Dinner.

W.A. ELIGIBILITY

At the time of catalogue printing Lamont and Mungalla Studs have completed compliance so that their bulls (97) are eligible for entry into Western Australia. Valley is awaiting laboratory results to also confirm their bulls (48) are eligible for entry into Western Australia. These results are expected prior to Sale day and will be advised as soon as they are received.

MAGS

No. 1 in the North!



SIRE REFERENCE

DURACK URANUS (P)

A bull selected by Lamont at MAGS 2010. We paid \$21,000 for him. His sons have sold well at MAGS including his run of bulls last year that sold to a top of \$19,000.

Sire of Lots 18, 20, 50, 73, 74, 77



MUNGALLA CONMAN (P)

We have confidence in this sire's future and believe he will be a very positive influence in the Stud. He has a lot of length, good breed quality and again a terrific nature.

Sire of Lots 8, 9, 41, 42, 45, 62, 108



LAMONT INFLUX (S)

Sons have topped previous MAGS Sales and sold to \$16,000, second Top Sale price in 2015.

Sire of Lots 15, 21, 76, 119



MUNGALLA COPPER (P)

Strongly muscled young sire that is putting body volume, width and attractive carcass values in his sons.

Sire of Lots 4, 46, 47, 61, 69, 99, 103



MUNGALLA TOTAL (P)

A large framed son of Farnham Redman out of one of the best cows in the Stud. He has exceptional length and muscling and a lot of sire appeal. Great temperament sire. This is his fifth crop of calves.

Sire of Lots 10, 72, 107, 109



MUNGALLA CROWN (P)

A new young sire selected for Stud duties for his great temperament, early growth for age and clean underline.

Sire of Lots 1, 5, 36, 38, 39, 65, 71, 96



MUNGALLA ACE (P)

This sire is an early maturing type, delivering thickness and optimum muscle expression.

Sire of Lots 44, 63, 70, 100, 101, 105



VALLEY GARRET (P)

A retained sire of Glenlands/ Billabong bloodlines that is breeding well.

Sire of Lots 28, 29, 32, 33, 34, 86, 115



MUNGALLA CLASSIC (P)

First sons selling in this Sale and looks to be one of our key sires for the future. Brilliant temperament, excellent length, strong poll head, good underline and great skin on him. Delivering consistency in his progeny.

Sire of Lots 2, 43, 64, 66, 68, 97, 104, 106



VALLEY LLOYD

He is a lighter red sire with plenty of size and natural beefiness, and of a little higher content. Well muscled, his virility and fertility are exceptional.

Sire of Lots 27, 31, 54, 55, 57, 128, 136, 138

VALLEY HERO (P)


A more medium frame, cherry red bull with lots of fleshing. A prolific calf getter, we have retained many of his daughters in the Stud.

Sire of Lots 60, 87, 90, 92, 94, 114

HOW TO REGISTER with ELITE LIVESTOCK AUCTIONS

Welcome to the new age of selling livestock in
Australia and **"Happy Bidding"**



-  1 Simply go to **www.elitelivestockauctions.com.au** using your desktop, laptop, iPad, iPhone or android device
-  2 Click on the **"Sign Up"** page / link
-  3 Create a bidding profile using the bidder registration page.
(You can either register as a livestock agent, company or private buyer.)
-  4 Agree to the Elite livestock Auctions Terms & Conditions and the Selling Agents Sale Terms & Conditions as printed in the official Sale Catalogue
-  5 Click **"Register"**
-  6 You will then be notified by email that an account has been created
-  7 Once an account has been created you are all **"Set to Bid"**
-  8 Each auction can then be viewed by clicking **"Live Auction"** logo on the Elite Livestock Auctions website
-  9 Once you receive email notification that your account has been created please go to the sale you wish to bid at and click **"Request to Bid"**
-  10 The sale agents will then approve your application to bid and on the sale catalogue you will see **"✓ Bid Request Approved"**
-  11 On Sale day simply login, click **"Enter Auction"** on the catalogue page and you can start bidding.
(There is no need for software download)
-  12 At the completion of the auction, invoicing will be carried out as per your registration details by the Selling Agents.

Having trouble registering and logging in?

Contact Elite Livestock Auctions

1300 15 31 35

Elite Livestock Auctions ABN 19 604 627 607

📍 340 Curtin Avenue West, Eagle Farm QLD 4009

📞 1300 15 31 35

🌐 www.elitelivestockauctions.com.au

📠 07 3041 5053

LOT 1 MUNGALLA FELLOW 2518 (POLL)

I.D. NO. RMD162518M D3

Calved: **14.08.15 (27 MTHS)**Brand No. **2518**

S. Cungelella Islington (P)

S. Mungalla Natural (P)

D. Mungalla 839/5 (P)

SIRE: MUNGALLA CROWN (P) D5

S. Farnham Redman (P)

D. Mungalla Penny (P)

D. Mungalla 282 (P)

S. Minlacowie Encounter 3455

S. Wolfgang Flange (P)

D. Tiggabon 411

DAM: MUNGALLA 1195 (P) D2

S. Droughtmaster bull

D. Mungalla 749 (P)

D. Droughtmaster cow

Note: Big growth in this yellow red bull. A clean poll, he also has a lot of length and excellent weight performance. Stands up strong on good feet and legs.

\$

LOT 2 MUNGALLA FORTUNE 2583 (POLL)

I.D. NO. RMD162583M D2

Calved: **01.09.15 (26 MTHS)**Brand No. **2583**

S. Mungalla Natural (P)

S. Mungalla Todman (P)

D. Mungalla 072 (P)

SIRE: MUNGALLA CLASSIC (P) D3

S. Wolfgang Flange (P)

D. Mungalla 1200 (P)

D. Mungalla 737 (P)

S.

S. Droughtmaster bull

D.

DAM: MUNGALLA 2588 (P) D1

S.

D. Droughtmaster cow

D.

\$

LOT 3 MUNGALLA 413 (POLL)

(HERD BULL)

Calved: **01.09.15 (26 MTHS)**Brand No. **413**

S. Mungalla Tribute (P)

SIRE: MUNGALLA BEACON (P) D3

D. Mungalla 1167 (P)

DAM: MUNGALLA 2837 (COMM)

\$

LOT 4 MUNGALLA FORT WORTH 2455 (POLL)

I.D. NO. RMD162455M D5

Calved: **01.09.15 (26 MTHS)**Brand No. **2455**

S. Farnham Redman (P)

S. Mungalla Total (P)

D. Farnham 199 (P)

SIRE: MUNGALLA COPPER (P) D5

S. Bryvonlea Elisha (P)

D. Mungalla Stella (P)

D. Farnham 191 (P)

S. Farnham Redman (P)

S. Mungalla Redford (S)

D. Mungalla 856/5 (P)

DAM: MUNGALLA 1241 (P) D5

S. Hamadra Cody (S)

D. Mungalla 847 (P)

D. Mungalla 294 (P)

Note: Fort Worth is one of the standout bulls early in our draft. He's a high weight performer that is long, square bodied, deep flanked and heavy muscled. A clean poll of good sheath, big hindquarter and the right skin and coat type. Backed by excellent, proven bloodlines that will underwrite his performance. Don't be tentative early in the Sale bidding as he warrants Studmaster inspection.

\$

LOT 5 MUNGALLA FRONTLINE 2495 (POLL)

I.D. NO. RMD162495M D3

Calved: **15.09.15 (26 MTHS)**Brand No. **2495**

S. Cungelella Islington (P)

S. Mungalla Natural (P)

D. Mungalla 839/5 (P)

SIRE: MUNGALLA CROWN (P) D5

S. Farnham Redman (P)

D. Mungalla Penny (P)

D. Mungalla 282 (P)

S. Minlacowie Encounter 3455

S. Wolfgang Flange (P)

D. Tiggabon 411

DAM: MUNGALLA 1187 (P) D2

S. Droughtmaster bull

D. Mungalla 779 (P)

D. Droughtmaster cow

Note: Frontline will be on the front page of your inspection list. He is a well made bull with an attractive combination of breed appeal and beef performance. Good square hindquarter on him.

\$

LOT 6 MUNGALLA 409 (POLL)

(HERD BULL)

Calved: **01.09.15 (26 MTHS)**Brand No. **409**

S. Mungalla Outback (P)

SIRE: MUNGALLA TRIVIA (P) D2

D. Mungalla 701 (P)

DAM: MUNGALLA 1999 (COMM)

\$



LOT 7 MUNGALLA 403 (POLL)

(HERD BULL)

Calved: **15.09.15 (26 MTHS)**Brand No. **403**

S. Mungalla Ringo (P)

SIRE: MUNGALLA VOID (P) D2

D. Mungalla 635 (P)

DAM: MUNGALLA 2840 (COMM)

Note: Bullock breeders you can lock on to this herd improver. A big, long, strong, upstanding commercial bull that is deep and square through the body and has a good underline.

LOT 8 MUNGALLA FREDDIE 2421 (POLL)

I.D. NO. RMD162421M D5

Calved: **01.10.15 (25 MTHS)**Brand No. **2421**

S. Farnham Redman (P)

S. Mungalla Tempo (P)

D. Mungalla 452 (P)

SIRE: MUNGALLA CONMAN (P) D5

S. Hamadra Cody (S)

D. Mungalla 839 (P)

D. Mungalla 106 (P)

S. Hamadra Cody (S)

S. Mungalla Tribute (P)

D. Mungalla Pearl (P)

DAM: MUNGALLA 1375 (P) D5

S. Mungalla Rick (P)

D. Mungalla 1013 (P)

D. Mungalla 158 (P)

LOT 9 MUNGALLA FOX 2414 (POLL)

I.D. NO. RMD162414M D5

Calved: **16.08.15 (27 MTHS)**Brand No. **2414**

S. Farnham Redman (P)

S. Mungalla Tempo (P)

D. Mungalla 452 (P)

SIRE: MUNGALLA CONMAN (P) D5

S. Hamadra Cody (S)

D. Mungalla 839 (P)

D. Mungalla 106 (P)

S. Billabong Jackson (P)

S. Bryvonlea Elisha (P)

D. Bryvonlea Fancy (P)

DAM: MUNGALLA 558 (P) D5

S. Cungelella Jamieson (P)

D. Mungalla 311 (P)

D. Mungalla 435 (P)

LOT 10 MUNGALLA FOOTHILL 2546 (POLL)

I.D. NO. RMD162546M D2

Calved: **01.10.15 (25 MTHS)**Brand No. **2546**

S. Janidon Pharaoh (P)

S. Farnham Redman (P)

D. Farnham 056 (P)

SIRE: MUNGALLA TOTAL (P) D5

S. Pine Valley 1566 (P)

D. Farnham 199 (P)

D. Valley 052 (P)

S.

S. Droughtmaster bull

D.

DAM: MUNGALLA 780 (P) D1

S.

D. Droughtmaster cow

D.

LOT 11 MUNGALLA FLEET 2510 (POLL)

I.D. NO. RMD162510M D3

Calved: **15.09.15 (26 MTHS)**Brand No. **2510**

S. Mungalla Outback (P)

S. Mungalla Trivia (P)

D. Mungalla 701 (P)

SIRE: MUNGALLA CAPTAIN (P) D3

S. Wolfgang Flange (P)

D. Mungalla 1034 (P)

D. Mungalla 565 (P)

S. Mungalla Outback (P)

S. Mungalla Trivia (P)

D. Mungalla 701 (P)

DAM: MUNGALLA 1746 (P) D2

S. Droughtmaster bull

D. Mungalla 1508 (P)

D. Droughtmaster cow

LOT 12 LAMONT 723 (POLL)

(HERD BULL)

Calved: **01.09.15 (26 MTHS)**Brand No. **723****SIRE: LAMONT IAN (P) D2****DAM: LAMONT DROUGHTMASTER COW**

Note: A deep and long bodied bull of higher content. Good skin on him.

LOT 13 LAMONT 733 (POLL)

(HERD BULL)

Calved: **02.10.15 (25 MTHS)**Brand No. **733****SIRE: LAMONT EZE 357 (P)****DAM: LAMONT DROUGHTMASTER COW**

Celebrating
HILLROSS *30*
years

HELPING CLIENTS ACHIEVE FINANCIAL FREEDOM SINCE 1987

LOT 14 LAMONT 775 (POLL)

(HERD BULL)

Calved: **01.09.15 (26 MTHS)**Brand No. **775****SIRE: LAMONT EZE 417 (P)****DAM: LAMONT DROUGHTMASTER COW**

Note: There's a lot to like about this bull. He's a sound structured type with great length and excellent smooth muscle pattern. Lovely breed characteristics.

LOT 15 LAMONT PABLO 600 (POLL)

I.D. NO. MAC16600M D3

Calved: **25.08.15 (27 MTHS)**Brand No. **600**

S. Talgai 730 (P)

S. Glenlands Impale (P)

D. Glenlands 1024

SIRE: LAMONT INFLUX (S) D2

S. Droughtmaster bull

D. Lamont 99 (P)

D. Droughtmaster cow

S. Redskin Shogun

S. Strathfield Wizdom (P)

D. Strathfield Rouge (P)

DAM: LAMONT 351 (P) D3

S. Garthowen Nick 2 (P)

D. Lamont Image (P)

D. Lamont 174 (P)

Note: Studmasters, here's a sire! Pablo will impress you with his bone, growth and outstanding natural muscle expression. Strong, masculine head on this exciting, correct and classy son of Influx. Looks a real bull breeder to us. Inspection recommended.

LOT 16 LAMONT 757 (POLL)

(HERD BULL)

Calved: **20.08.15 (27 MTHS)**Brand No. **757****SIRE: PUREBRED DROUGHTMASTER BULL****DAM: LAMONT DROUGHTMASTER COW**

Note: Have a look at this impressive bull. Carries a tremendous combination of breed quality, growth, beef performance and an excellent head and eye. Stands square and sound and will attract the attention of all discerning cattle producers.

LOT 17 LAMONT 759 (POLL)

(HERD BULL)

Calved: **25.09.15 (26 MTHS)**Brand No. **759****SIRE: PUREBRED DROUGHTMASTER BULL****DAM: LAMONT DROUGHTMASTER COW**

Note: Here is an attractive, upstanding, long bodied bull that is strong along the topline. He's a natural heavy muscled bull again with a good head on him, and good testicles as well.

LOT 18 LAMONT PEDRO 606 (POLL)

I.D. NO. MAC16606M D3

Calved: **20.09.15 (26 MTHS)**Brand No. **606**

S. Minlacowie Encounter 3455

S. Wolfgang Fact (P)

D. Nelma Hester (P)

SIRE: DURACK URANUS (P) D2

S. Durack Ashfield (P)

D. Durack 576

D. Droughtmaster cow

S. Glenlands Atom (P)

S. Vale View Magnum (P)

D. Vale View Henena (P)

DAM: LAMONT 146 (P) D5

S. Billabong Influential (S)

D. Mungalla 322 (P)

D. Mungalla 106 (P)

LOT 19 LAMONT 601 (POLL)

(HERD BULL)

Calved: **03.10.15 (25 MTHS)**Brand No. **601****SIRE: LAMONT EZE 357 (P)****DAM: LAMONT 393****LOT 20 LAMONT PRIDE 630 (P)**

I.D. NO. MAC16630M D3

Calved: **15.11.15 (24 MTHS)**Brand No. **630**

S. Minlacowie Encounter 3455

S. Wolfgang Fact (P)

D. Nelma Hester (P)

SIRE: DURACK URANUS (P) D2

S. Durack Ashfield (P)

D. Durack 576

D. Droughtmaster cow

S. Calioran Adam (P)

S. Glenlands Oratorio (P)

D. Coorambulla Chickadee (P)

DAM: DURACK 5451 D5

S. Medway 01391M (P)

D. Durack 5276 (P)

D. Durack Lucina (P)

LOT 21 LAMONT 731 (POLL)

(HERD BULL)

Calved: **12.10.15 (25 MTHS)**Brand No. **731****SIRE: LAMONT INFLUX (S) D2****DAM: LAMONT DROUGHTMASTER COW**

Note: This Influx 2yo son shows an abundance of thickness and muscling. You'll like his width along the topline into a big square hindquarter. Good testicles.

LOT 22 LAMONT 710 (POLL)

(HERD BULL)

Calved: **15.12.15 (23 MTHS)**Brand No. **710****SIRE: LAMONT EZE 465 (S)****DAM: LAMONT DROUGHTMASTER COW**

Note: Not yet 2yo, this bull will deliver his attractive softness of finish and smooth muscle pattern to his progeny. Square and deep bodied.

_____ \$ _____

LOT 23 LAMONT 765 (POLL)

(HERD BULL)

Calved: **15.10.15 (25 MTHS)**Brand No. **765****SIRE: LAMONT EZE 417 (P)****DAM: LAMONT DROUGHTMASTER COW**

Note: This is an eye catching, long bodied bull with ideal skin and coat type. Get behind him and have a look at his strong hindquarter.

_____ \$ _____

LOT 24 LAMONT 771 (POLL)

(HERD BULL)

Calved: **01.10.15 (25 MTHS)**Brand No. **771****SIRE: LAMONT EZE 417 (P)****DAM: LAMONT DROUGHTMASTER COW**

Note: This fellow is by the same sire as the previous bull and again displays appealing beef and breed credentials. We like his length, lovely smooth muscle pattern, good sheath and his strong and straight topline.

_____ \$ _____

LOT 25 VALLEY 1535 (POLL)

(HERD BULL)

Calved: **28.08.15 (27 MTHS)**Brand No. **1535****SIRE: VALLEY ZD1 779****DAM: PUREBRED VALLEY ZD1 COW**

Note: This is a big upstanding, long and strong bull. Looks a virile type and clean poll.

_____ \$ _____

LOT 26 VALLEY 1482 (SCURRS)

(HERD BULL)

Calved: **15.09.15 (26 MTHS)**Brand No. **1482****SIRE: PUREBRED VALLEY ZD1 SIRE****DAM: PUREBRED VALLEY ZD1 COW**

_____ \$ _____

LOT 27 VALLEY 1507 (POLL)

(HERD BULL)

Calved: **10.10.15 (25 MTHS)**Brand No. **1507****SIRE: VALLEY LLOYD 1265 D2****DAM: PUREBRED VALLEY ZD1 COW**

_____ \$ _____

LOT 28 VALLEY ORBIT 1475 (SCURRS)

I.D. NO. S1S161475M D2

Calved: **01.09.15 (26 MTHS)**Brand No. **1475**

S. Cungelella Foundation (P)

S. Glenlands Justice (P)

D. Glenlands 1108

SIRE: VALLEY GARRET (P) D5

S. Billabong Goliath (P)

D. Valley 531 (P)

D. Valley 377 (P)

S.

S. Droughtmaster bull

D.

DAM: VALLEY 800 (P) D1

S.

D. Droughtmaster cow

D.

Note: This son of Garret appeals as a well made, smooth muscle pattern bull with a light sheath and good testicles. Has the skin and coat type ideal for the North.

_____ \$ _____

LOT 29 VALLEY OATH 1478 (POLL)

I.D. NO. S1S161478M D2

Calved: **20.09.15 (26 MTHS)**Brand No. **1478**

S. Cungelella Foundation (P)

S. Glenlands Justice (P)

D. Glenlands 1108

SIRE: VALLEY GARRET (P) D5

S. Billabong Goliath (P)

D. Valley 531 (P)

D. Valley 377 (P)

S.

S. Herd bull

D.

DAM: VALLEY 814 (P) D1

S. Droughtmaster bull

D. Valley 0142 (P)

D. Droughtmaster cow

Note: Here's another bull by Garret that shows the same attractive qualities of the previous bull so just 'cut and paste' the notes from Lot 28.

_____ \$ _____

LOT 30 VALLEY 1557 (POLL)

(HERD BULL)

Calved: **20.08.15 (27 MTHS)**Brand No. **1557****SIRE: PUREBRED VALLEY ZD1 SIRE****DAM: PUREBRED VALLEY ZD1 COW**

_____ \$ _____

LOT 31 VALLEY 1543 (SCURRS)

(HERD BULL)

Calved: **01.09.15 (26 MTHS)**Brand No. **1543****SIRE: VALLEY LLOYD 1265 D2****DAM: PUREBRED VALLEY ZD1 COW**

_____ \$ _____

LOT 32 VALLEY ORION 1472 (POLL)

I.D. NO. S1S161472M D2

Calved: **28.08.15 (27 MTHS)**Brand No. **1472**

S. Cungelella Foundation (P)

S. Glenlands Justice (P)

D. Glenlands 1108

SIRE: VALLEY GARRET (P) D5

S. Billabong Goliath (P)

D. Valley 531 (P)

D. Valley 377 (P)

S.

S. Droughtmaster bull

D.

DAM: VALLEY 863 (P) D1

S.

D. Droughtmaster cow

D.

\$

LOT 33 VALLEY OAKS 1468 (POLL)

I.D. NO. S1S161468M D2

Calved: **01.09.15 (26 MTHS)**Brand No. **1468**

S. Cungelella Foundation (P)

S. Glenlands Justice (P)

D. Glenlands 1108

SIRE: VALLEY GARRET (P) D5

S. Billabong Goliath (P)

D. Valley 531 (P)

D. Valley 377 (P)

S.

S. Droughtmaster bull

D.

DAM: VALLEY 972 (P) D1

S.

D. Droughtmaster cow

D.

Note: Oaks' muscle expression, even and smooth finish are a stand out. A correct type with good big testicles.

\$

LOT 34 VALLEY OPTIC 1471 (POLL)

I.D. NO. S1S161471M D2

Calved: **02.09.15 (26 MTHS)**Brand No. **1471**

S. Cungelella Foundation (P)

S. Glenlands Justice (P)

D. Glenlands 1108

SIRE: VALLEY GARRET (P) D5

S. Billabong Goliath (P)

D. Valley 531 (P)

D. Valley 377 (P)

S.

S. Droughtmaster bull

D.

DAM: VALLEY 00155 (P) D1

S. Droughtmaster bull

D. Valley 094 (P)

D. Droughtmaster cow

\$

LOT 35 VALLEY 1532 (POLL)

(HERD BULL)

Calved: **01.09.15 (26 MTHS)**Brand No. **1532****SIRE: VALLEY ZD1 660****DAM: PUREBRED VALLEY ZD1 COW**

\$

LOT 36 MUNGALLA FOCUS 2505 (POLL)

I.D. NO. RMD162505M D3

Calved: **01.10.15 (25 MTHS)**Brand No. **2505**

S. Cungelella Islington (P)

S. Mungalla Natural (P)

D. Mungalla 839/5 (P)

SIRE: MUNGALLA CROWN (P) D5

S. Farnham Redman (P)

D. Mungalla Penny (P)

D. Mungalla 282 (P)

S. Mungalla Ringo (P)

S. Mungalla V8 (P)

D. Mungalla 741 (P)

DAM: MUNGALLA 1879 (P) D2

S. Droughtmaster bull

D. Mungalla 1911 (P)

D. Droughtmaster cow

Note: Focus is another eye catching son of Crown that shows real sire potential. He is a soft covered bull that is deep through the quarters and has a good set of testicles. Studmasters, make sure you inspect him.

\$

LOT 37 MUNGALLA FITZROY 2567 (POLL)

I.D. NO. RMD162567M D4

Calved: **01.09.15 (26 MTHS)**Brand No. **2567**

S. Mungalla Outback (P)

S. Mungalla Trivia (P)

D. Mungalla 701 (P)

SIRE: MUNGALLA CAPTAIN (P) D3

S. Wolfgang Flange (P)

D. Mungalla 1034 (P)

D. Mungalla 565 (P)

S. Mungalla Outback (P)

S. Mungalla Trivia (P)

D. Mungalla 701 (P)

DAM: MUNGALLA 1757 (P) D3

S. Mungalla Redford (S)

D. Mungalla 1241 (P)

D. Mungalla 847 (P)

Note: Fitzroy is again a high quality sire prospect with abundant breed style. Optimum natural beef performance credentials, an excellent strong head and eye, big hindquarter and good testicles all complete the package.

\$



LOT 38 MUNGALLA FITZGERALD 2524 (P)

I.D. NO. RMD162524M D3

Calved: **17.08.15 (27 MTHS)**Brand No. **2524**

S. Cungelella Islington (P)

S. Mungalla Natural (P)

D. Mungalla 839/5 (P)

SIRE: MUNGALLA CROWN (P) D5

S. Farnham Redman (P)

D. Mungalla Penny (P)

D. Mungalla 282 (P)

S. Farnham Redman (P)

S. Mungalla Outback (P)

D. Mungalla 897 (P)

DAM: MUNGALLA 916 (P) D2

S. Droughtmaster bull

D. Mungalla 917 (P)

D. Droughtmaster cow

\$

LOT 39 MUNGALLA FAMILYMAN 2503 (POLL)

I.D. NO. RMD162503M D3

Calved: **01.10.15 (25 MTHS)**Brand No. **2503**

S. Cungelella Islington (P)

S. Mungalla Natural (P)

D. Mungalla 839/5 (P)

SIRE: MUNGALLA CROWN (P) D5

S. Farnham Redman (P)

D. Mungalla Penny (P)

D. Mungalla 282 (P)

S. Farnham Redman (P)

S. Mungalla Outback (P)

D. Mungalla 897 (P)

DAM: MUNGALLA 549 (P) D2

S. Droughtmaster bull

D. Mungalla 634 (P)

D. Droughtmaster cow

\$

LOT 40 MUNGALLA FUNCTION 2564 (POLL)

I.D. NO. RMD162564M D3

Calved: **15.09.15 (26 MTHS)**Brand No. **2564**

S. Mungalla Niles (P)

S. Mungalla Ringo (P)

D. Farnham 163 (P)

SIRE: MUNGALLA VALVE (P) D2

S. Droughtmaster bull

D. Mungalla 619 (P)

D. Droughtmaster cow

S. Cungelella Islington (P)

S. Mungalla Natural (P)

D. Mungalla 839/5 (P)

DAM: MUNGALLA 1171 (P) D2

S. Droughtmaster bull

D. Mungalla 1185 (P)

D. Droughtmaster cow

\$

LOT 41 MUNGALLA FRANCIS 2419 (POLL)

I.D. NO. RMD162419M D5

Calved: **21.11.15 (24 MTHS)**Brand No. **2419**

S. Farnham Redman (P)

S. Mungalla Tempo (P)

D. Mungalla 452 (P)

SIRE: MUNGALLA CONMAN (P) D5

S. Hamadra Cody (S)

D. Mungalla 839 (P)

D. Mungalla 106 (P)

S. Julemar Dory (P)

S. Valley Phantom (P)

D. Valley 210 (P)

DAM: MUNGALLA 392 (P) D5

S. Billabong Influential (S)

D. Mungalla 297 (P)

D. Mungalla 770 (P)

\$

LOT 42 MUNGALLA FLEMMING 2425 (POLL)

I.D. NO. RMD162425M D5

Calved: **15.10.15 (25 MTHS)**Brand No. **2425**

S. Farnham Redman (P)

S. Mungalla Tempo (P)

D. Mungalla 452 (P)

SIRE: MUNGALLA CONMAN (P) D5

S. Hamadra Cody (S)

D. Mungalla 839 (P)

D. Mungalla 106 (P)

S. Mungalla Natural (P)

S. Mungalla Todman (P)

D. Mungalla 072 (P)

DAM: MUNGALLA 1389 D5

S. Mungalla Playboy (P)

D. Mungalla 801 (P)

D. Mungalla 434 (P)

\$

LOT 43 MUNGALLA FRAME 2599 (POLL)

I.D. NO. RMD162599M D4

Calved: **07.09.15 (26 MTHS)**Brand No. **2599**

S. Mungalla Natural (P)

S. Mungalla Todman (P)

D. Mungalla 072 (P)

SIRE: MUNGALLA CLASSIC (P) D3

S. Wolfgang Flange (P)

D. Mungalla 1200 (P)

D. Mungalla 737 (P)

S. Mungalla Ringo (P)

S. Mungalla Valve (P)

D. Mungalla 619 (P)

DAM: MUNGALLA 2097 (P) D3

S. Mungalla Sunday (P)

D. Mungalla 1235 (P)

D. Mungalla 858 (P)

Note: Here is a light red bull, a clean poll and light sheathed. Beautiful topline and spring of rib, ideal smoothness of finish and great skin for the North.

\$

LOT 44 MUNGALLA FRESH 2490 (POLL)

I.D. NO. RMD162490M D5

Calved: **15.12.15 (23 MTHS)**Brand No. **2490**

S. Minlacowie Clairon 3186 (P)

S. Kandanga Cassius (P)

D. Greenacres Jessica Joy

SIRE: MUNGALLA ACE (P) D5

S. Bryvonlea Elisha (P)

D. Mungalla 586 (P)

D. Mungalla 615 (P)

S. Billabong Jackson (P)

S. Bryvonlea Elisha (P)

D. Bryvonlea Fancy (P)

DAM: MUNGALLA 1282 (P) D5

S. Mungalla Natural (P)

D. Mungalla Rebecca (P)

D. Mungalla 433 (P)

\$

LOT 45 MUNGALLA FREEDOM 2427 (POLL)

I.D. NO. RMD162427M D5

Calved: **11.08.15 (27 MTHS)**Brand No. **2427**

S. Farnham Redman (P)

S. Mungalla Tempo (P)

D. Mungalla 452 (P)

SIRE: MUNGALLA CONMAN (P) D5

S. Hamadra Cody (S)

D. Mungalla 839 (P)

D. Mungalla 106 (P)

S. Glenlands Fairbairn (P)

S. Hamadra Cody (S)

D. Hamadra Jessie (P)

DAM: MUNGALLA 836 (P) D5

S. Valley Phantom (P)

D. Mungalla 372 (P)

D. Mungalla 310 (P)

\$

LOT 46 MUNGALLA FOUNDER 2453 (POLL)

I.D. NO. RMD162453M D5

Calved: **15.08.15 (27 MTHS)**Brand No. **2453**

S. Farnham Redman (P)

S. Mungalla Total (P)

D. Farnham 199 (P)

SIRE: MUNGALLA COPPER (P) D5

S. Bryvonlea Elisha (P)

D. Mungalla Stella (P)

D. Farnham 191 (P)

S. Farnham Redman (P)

S. Mungalla Tempo (P)

D. Mungalla 452 (P)

DAM: MUNGALLA 1894 (P) D5

S. Bryvonlea Elisha (P)

D. Mungalla 1282 (P)

D. Mungalla Rebecca (P)

\$

LOT 47 MUNGALLA FARNHAM 2574 (POLL)

I.D. NO. RMD162574M D2

Calved: **01.09.15 (26 MTHS)**Brand No. **2574**

S. Farnham Redman (P)

S. Mungalla Total (P)

D. Farnham 199 (P)

SIRE: MUNGALLA COPPER (P) D5

S. Bryvonlea Elisha (P)

D. Mungalla Stella (P)

D. Farnham 191 (P)

S.

S. Droughtmaster bull

D.

DAM: MUNGALLA 1543 (P) D1

S.

D. Droughtmaster cow

D.

\$

LOT 48 LAMONT 788 (POLL)

(HERD BULL)

Calved: **01.10.15 (25 MTHS)**Brand No. **788****SIRE: LAMONT EZE 416****DAM: LAMONT DROUGHTMASTER COW**

Note: A yellow red of attractive smoothness. Big bodied, depth, well fleshed and good natured are some of his features.

\$

LOT 49 LAMONT 724 (POLL)

(HERD BULL)

Calved: **15.10.15 (25 MTHS)**Brand No. **724****SIRE: STRATHFIELD WIZDOM (P) D2****DAM: LAMONT DROUGHTMASTER COW**

Note: This son of Wizdom is a clean poll with high beef performance. Heavy boned and thick through the body. Huge hindquarter to him and meat and muscle in all the right places.

\$

LOT 50 LAMONT PILOT 613 (POLL)

I.D. NO. MAC16613M D3

Calved: **01.09.15 (26 MTHS)**Brand No. **613**

S. Minlacowie Encounter 3455

S. Wolfgang Fact (P)

D. Nelma Hester (P)

SIRE: DURACK URANUS (P) D2

S. Durack Ashfield (P)

D. Durack 576

D. Droughtmaster cow

S. Glenlands Atom (P)

S. Vale View Magnum (P)

D. Vale View Henena (P)

DAM: LAMONT 141 (P) D5

S. Mungalla Jackpot (P)

D. Lamont 24 (P)

D. Valley 398 (P)

\$



Lot 14 (Poll)



Lot 15 (Poll)



Lot 16 (Poll)



Lot 17 (Poll)



Lot 18 (Poll)

Celebrating
HILLROSS 30
 years

HELPING CLIENTS ACHIEVE FINANCIAL FREEDOM SINCE 1987

Financial Freedom begins with a first step

So tell us, what's your idea of Financial Freedom?

Contact your financial adviser at **Hillross Mackay** 07 4957 2977 or visit 'The Avenue' 25-29 Evans Avenue North Mackay Old 4740

www.hfsm.hillross.com.au

HFS (Mackay) Pty Ltd ABN 88 108 272 466 trading as Hillross Mackay is a Corporate Authorised Representative of Hillross Financial Services Limited ABN 77 003 323 055, AFSL 232705

Any advice contained in this advertisement is of general nature only and does not take into account the objectives, financial situation or needs of any particular person. Therefore, before making any decision, you should consider the appropriateness of the advice with regard to those matters.



Proud supporters of Agribusiness.

Contact your local Specialist:

John Bourke, Townsville.

☎ 0419 265 957

Anthony (Ash) Lewis, Townsville.

☎ 0478 489 005

Cameron Heath, Emerald.

☎ 0459 076 713



200 years proudly supporting Australia

Westpac Banking Corporation ABN 33 007 457 141 AFSL and Australian credit licence 233714. WBC 00716 10/17



Lamont Orlando topped the 2016 MAGS Sale at \$30,000 selling to the Childs Family of Glenlands Stud, Central Queensland.



Agribusiness – “*Making Global Expertise Local*”

Cashflow and budgets

Family business consulting

Technology & communications

Business acquisitions, divestments and restructuring

Superannuation

Cloud technology solutions

Risk management & system reviews

Greg Peel

Partner

greg.peel@pvwpartners.com (07) 4721 8502

Amanda Molino

Manager

amanda.molino@pvwpartners.com (07) 4721 8632

Sonia Chalk

Executive

sonia.chalk@pvwpartners.com (07) 4721 8632

Clancy Cox

Consultant

clancy.cox@pvwpartners.com (07) 4721 8531



Lot 139 (Scurr)



Lot 140



Lot 141 (Scurr)



Lot 143 (Scurr)



Contact **Fitton Insurance Brokers** today for:
Business Insurance
Consultants and Contractor | Equine Insurance
Farm, Crop and Livestock Insurance
Personal Insurance | Transport and Earthmoving

We are pleased to be supporting the 2017 MAGS Sale. Mention this ad when you contact us to receive
5% discount off your premium!

See Ron at the sales 0408 717 733
07 4638 4233
insure@fitton.com.au
www.fitton.com.au

 Find us on facebook

Steadfast
STRONG. CALM. BOLD. WITH TOTAL ASSURANCE.



The high quality of this impressive Charolais x Droughtmaster steer from Lamont stood out as Rohan Marks on Cowboy took him around the course to win the 2016 Canning Downs Campdraft at Warwick.
 Photo credit: Sue Waldron

LOT 51 LAMONT 764 (SCURRS)

(HERD BULL)

Calved: **25.09.15 (26 MTHS)**Brand No. **764****SIRE: LAMONT EZE 416****DAM: LAMONT DROUGHTMASTER COW**

_____ \$ _____

LOT 52 LAMONT 768 (SCURRS)

(HERD BULL)

Calved: **05.10.15 (25 MTHS)**Brand No. **768****SIRE: LAMONT EZE 416****DAM: LAMONT DROUGHTMASTER COW**

_____ \$ _____

LOT 53 LAMONT 736 (POLL)

(HERD BULL – RED BRAHMAN X)

Calved: **01.11.15 (24 MTHS)**Brand No. **736****SIRE: LANCEFIELD D WINSLOW (P)****DAM: LAMONT DROUGHTMASTER COW**

_____ \$ _____

LOT 54 VALLEY 1512 (POLL)

(HERD BULL)

Calved: **01.09.15 (26 MTHS)**Brand No. **1512****SIRE: VALLEY LLOYD 1265 D2****DAM: PUREBRED VALLEY ZD1 COW**

_____ \$ _____

LOT 55 VALLEY 1540 (POLL)

(HERD BULL)

Calved: **15.09.15 (26 MTHS)**Brand No. **1540****SIRE: VALLEY LLOYD 1265 D2****DAM: PUREBRED VALLEY ZD1 COW**

_____ \$ _____

LOT 56 VALLEY 1503 (POLL)

(HERD BULL)

Calved: **20.09.15 (26 MTHS)**Brand No. **1503****SIRE: VALLEY ZD1 779****DAM: PUREBRED VALLEY ZD1 COW**

_____ \$ _____

LOT 57 VALLEY 1500 (SCURRS)

(HERD BULL)

Calved: **10.09.15 (26 MTHS)**Brand No. **1500****SIRE: VALLEY LLOYD 1265 D2****DAM: PUREBRED VALLEY ZD1 COW**

_____ \$ _____

LOT 58 VALLEY 1505 (POLL)

(HERD BULL)

Calved: **15.09.15 (26 MTHS)**Brand No. **1505****SIRE: VALLEY ZD1 779****DAM: PUREBRED VALLEY ZD1 COW**

_____ \$ _____

LOT 59 VALLEY 1490 (POLL)

(HERD BULL)

Calved: **20.10.15 (25 MTHS)**Brand No. **1490****SIRE: PUREBRED VALLEY ZD1 SIRE****DAM: PUREBRED VALLEY ZD1 COW**

Note: There is a lot to recommend this quality young herd bull. Carries an abundance of natural muscling on a deep and square body and he is strong and broad along the topline. The right skin and coat type, and testicles are good also. A valuable bull for top level steer production.

_____ \$ _____

LOT 60 VALLEY OBTAIN 1506 (POLL)

I.D. NO. S1S161506M D4

Calved: **15.10.15 (25 MTHS)**Brand No. **1506**

S. Glenlands Herald (P)

S. Glenlands D Lewis (P)

D. Glenlands D 00/123 (P)

SIRE: VALLEY HERO 836 (P) D5

S. Billabong Goliath (P)

D. Valley 531 (P)

D. Valley 377 (P)

S. Glenlands Justice (P)

S. Valley Garret (P)

D. Valley 531 (P)

DAM: VALLEY 1111 (P) D3

S. RSVP Big Time (T) (S)

D. Valley 882 (P)

D. Valley 808 (P)

Note: Obtain is a very good quality sire prospect, clean poll and eye catching. His lovely length, heavy muscling and softness of cover are complemented by his attractive breed style. Backed by a genetic strength combination of our leading sirelines RSVP Big Time, Valley Garret, Billabong Goliath and Glenlands Lewis.

_____ \$ _____

LOT 61 MUNGALLA FROST 2442 (POLL)

I.D. NO. RMD162442M D4

Calved: **01.09.15 (26 MTHS)**Brand No. **2442**

S. Farnham Redman (P)

S. Mungalla Total (P)

D. Farnham 199 (P)

SIRE: MUNGALLA COPPER (P) D5

S. Bryvonlea Elisha (P)

D. Mungalla Stella (P)

D. Farnham 191 (P)

S. Mungalla Mistro (P)

S. Mungalla Sunday (P)

D. Mungalla 669 (P)

DAM: MUNGALLA 1224 (P) D3

S. Mungalla Perfection (P)

D. Mungalla 718 (P)

D. Mungalla 748 (P)

\$

LOT 62 MUNGALLA FRANK 2417 (POLL)

I.D. NO. RMD162417M D5

Calved: **15.09.15 (26 MTHS)**Brand No. **2417**

S. Farnham Redman (P)

S. Mungalla Tempo (P)

D. Mungalla 452 (P)

SIRE: MUNGALLA CONMAN (P) D5

S. Hamadra Cody (S)

D. Mungalla 839 (P)

D. Mungalla 106 (P)

S. Kandanga Cassius (P)

S. Mungalla Ace (P)

D. Mungalla 586 (P)

DAM: MUNGALLA 2128 (P) D5

S. Farnham Redman (P)

D. Mungalla Olivia (P)

D. Mungalla 884 (P)

Note: This well bred Conman son impresses with his length and overall sire style. He presents strongly and, backed by a proven pedigree including a double cross of Redman, you'd expect he'd breed his valuable beef features and breed qualities 'true to type' in his progeny.

\$

LOT 63 MUNGALLA FLAIR 2483 (POLL)

I.D. NO. RMD162483M D5

Calved: **15.11.15 (24 MTHS)**Brand No. **2483**

S. Minlacowie Clairon 3186 (P)

S. Kandanga Cassius (P)

D. Greenacres Jessica Joy

SIRE: MUNGALLA ACE (P) D5

S. Bryvonlea Elisha (P)

D. Mungalla 586 (P)

D. Mungalla 615 (P)

S. Mungalla Natural (P)

S. Mungalla Todman (P)

D. Mungalla 072 (P)

DAM: MUNGALLA 1352 (P) D5

S. Hamadra Cody (S)

D. Mungalla 847 (P)

D. Mungalla 294 (P)

\$

LOT 64 MUNGALLA FRED 2584 (POLL)

I.D. NO. RMD162584M D2

Calved: **01.11.15 (24 MTHS)**Brand No. **2584**

S. Mungalla Natural (P)

S. Mungalla Todman (P)

D. Mungalla 072 (P)

SIRE: MUNGALLA CLASSIC (P) D3

S. Wolfgang Flange (P)

D. Mungalla 1200 (P)

D. Mungalla 737 (P)

S. Mungalla Ringo (P)

S. Mungalla V8 (P)

D. Mungalla 741 (P)

DAM: MUNGALLA 2590 (P) D1

S.

D. Droughtmaster cow

D.

\$

LOT 65 MUNGALLA FARMER 2523 (POLL)

I.D. NO. RMD162523M D3

Calved: **14.08.15 (27 MTHS)**Brand No. **2523**

S. Cungelella Islington (P)

S. Mungalla Natural (P)

D. Mungalla 839/5 (P)

SIRE: MUNGALLA CROWN (P) D5

S. Farnham Redman (P)

D. Mungalla Penny (P)

D. Mungalla 282 (P)

S. Farnham Redman (P)

S. Mungalla Niles (P)

D. Droughtmaster cow

DAM: MUNGALLA 824 (P) D2

S. Droughtmaster bull

D. Mungalla 835 (P)

D. Droughtmaster cow

\$

LOT 66 MUNGALLA FULLBACK 2597 (POLL)

I.D. NO. RMD162597M D3

Calved: **01.11.15 (24 MTHS)**Brand No. **2597**

S. Mungalla Natural (P)

S. Mungalla Todman (P)

D. Mungalla 072 (P)

SIRE: MUNGALLA CLASSIC (P) D3

S. Wolfgang Flange (P)

D. Mungalla 1200 (P)

D. Mungalla 737 (P)

S. Farnham Redman (P)

S. Mungalla Tempo (P)

D. Mungalla 452 (P)

DAM: MUNGALLA 2061 (P) D2

S. Droughtmaster bull

D. Mungalla 989 (P)

D. Droughtmaster cow

\$

LOT 67 MUNGALLA 410 (POLL)

(HERD BULL)

Calved: **01.09.15 (26 MTHS)**Brand No. **410**

S. Mungalla Tribute (P)

SIRE: MUNGALLA BEACON (P) D3

D. Mungalla 1167 (P)

DAM: MUNGALLA 2000 (COMM)

\$

LOT 68 MUNGALLA 2581 (POLL)

(HERD BULL)

Calved: **15.09.15 (26 MTHS)**Brand No. **2581**

S. Mungalla Todman (P)

SIRE: MUNGALLA CLASSIC (P) D3

D. Mungalla 1200 (P)

DAM: MUNGALLA 2972

Note: Eligible for D2 registration.

\$

LOT 69 MUNGALLA FRITZ 2444 (POLL)

I.D. NO. RMD162444M D3

Calved: **25.07.15 (28 MTHS)**Brand No. **2444**

S. Farnham Redman (P)

S. Mungalla Total (P)

D. Farnham 199 (P)

SIRE: MUNGALLA COPPER (P) D5

S. Bryvonlea Elisha (P)

D. Mungalla Stella (P)

D. Farnham 191 (P)

S. Hamadra Cody (S)

S. Mungalla Vista (P)

D. Mungalla Paris (P)

DAM: MUNGALLA 1850 (P) D2

S. Mungalla V8 (P)

D. Mungalla 1873 (P)

D. Droughtmaster cow

\$

LOT 70 MUNGALLA FERNLEIGH 2471 (HORN)

I.D. NO. RMD162471M D5

Calved: **15.09.15 (26 MTHS)**Brand No. **2471**

S. Minlacowie Clairon 3186 (P)

S. Kandanga Cassius (P)

D. Greenacres Jessica Joy

SIRE: MUNGALLA ACE (P) D5

S. Bryvonlea Elisha (P)

D. Mungalla 586 (P)

D. Mungalla 615 (P)

S. Billabong Jackson (P)

S. Bryvonlea Elisha (P)

D. Bryvonlea Fancy (P)

DAM: MUNGALLA 1288 (P) D5

S. Billabong Hierarch (P)

D. Mungalla 284 (P)

D. Farnham 195 (P)

\$

LOT 71 MUNGALLA FIRE 2504 (POLL)

I.D. NO. RMD162504M D3

Calved: **01.11.15 (24 MTHS)**Brand No. **2504**

S. Cungelella Islington (P)

S. Mungalla Natural (P)

D. Mungalla 839/5 (P)

SIRE: MUNGALLA CROWN (P) D5

S. Farnham Redman (P)

D. Mungalla Penny (P)

D. Mungalla 282 (P)

S. Mungalla Mistro (P)

S. Mungalla Sunday (P)

D. Mungalla 669 (P)

DAM: MUNGALLA 1235 (P) D2

S. Droughtmaster bull

D. Mungalla 858 (P)

D. Mungalla 863 (P)

\$

LOT 72 MUNGALLA FINLEY 2545 (POLL)

I.D. NO. RMD162545M D2

Calved: **15.09.15 (26 MTHS)**Brand No. **2545**

S. Janidon Pharaoh (P)

S. Farnham Redman (P)

D. Farnham 056 (P)

SIRE: MUNGALLA TOTAL (P) D5

S. Pine Valley 1566 (P)

D. Farnham 199 (P)

D. Valley 052 (P)

S.

S. Droughtmaster bull

D.

DAM: MUNGALLA 1511 D1

S.

D. Droughtmaster cow

D.

\$



LOT 73 LAMONT PERRY 635 (POLL)

I.D. NO. MAC16635M D3

Calved: **15.11.15 (24 MTHS)**Brand No. **635**

S. Minlacowie Encounter 3455

S. Wolfgang Fact (P)

D. Nelma Hester (P)

SIRE: DURACK URANUS (P) D2

S. Durack Ashfield (P)

D. Durack 576

D. Droughtmaster cow

S. Calioran Adam (P)

S. Glenlands Oratorio (P)

D. Coorambulla Chickadee (P)

DAM: LAMONT 441 (S) D3

S. Vale View Magnum (P)

D. Lamont 174 (P)

D. Lamont 24 (P)

Note: Perry won't be 2yo until next week however Studmasters should not overlook him. He's a pedigree powerful, strong headed bull of good breed quality. A good bodied young prospect with a lot of depth.

\$ _____

LOT 74 LAMONT PLUTO 614 (POLL)

I.D. NO. MAC16614M D3

Calved: **15.11.15 (24 MTHS)**Brand No. **614**

S. Minlacowie Encounter 3455

S. Wolfgang Fact (P)

D. Nelma Hester (P)

SIRE: DURACK URANUS (P) D2

S. Durack Ashfield (P)

D. Durack 576

D. Droughtmaster cow

S. Redskin Shogun

S. Strathfield Wizdom (P)

D. Strathfield Rouge (P)

DAM: LAMONT JEWEL (P) D3

S. Glenlands Fritz (P)

D. Lamont 72 (P)

D. Valley 368 (P)

Note: One good young bull follows another. Pluto is another impressive son of Uranus that has tremendous natural muscling and a big full flank. Good skin and coat type and he just puts it all together easily. Leading bullock breeders as well as Studmasters will see the potential in this bull.

\$ _____

LOT 75 LAMONT PIPER 599 (POLL)

I.D. NO. MAC16599M D5

Calved: **10.12.15 (23 MTHS)**Brand No. **599**

S. Swan Ironman

S. Calioran Adam (P)

D. Swan 98/289 (P)

SIRE: GLENLANDS ORATORIO (P) D5

S. Swan Crackerjack (P)

D. Coorambulla Chickadee (P)

D. Swan 1824 (P)

S. Greenacres A Ironside (P)

S. Billabong Inquisitor II (P)

D. Billabong 479 (P)

DAM: MUNGALLA 333 (P) D5

S. Pine Valley 1566 (P)

D. Farnham 191 (P)

D. Mungalla 102-6 (P)

\$ _____

LOT 76 LAMONT 739 (SCURRS)

(HERD BULL)

Calved: **30.10.15 (25 MTHS)**Brand No. **739****SIRE: LAMONT INFLUX (S) D2****DAM: LAMONT DROUGHTMASTER COW**

\$ _____

LOT 77 LAMONT PROFESSOR 602 (POLL)

I.D. NO. MAC16602M D3

Calved: **01.11.15 (24 MTHS)**Brand No. **602**

S. Minlacowie Encounter 3455

S. Wolfgang Fact (P)

D. Nelma Hester (P)

SIRE: DURACK URANUS (P) D2

S. Durack Ashfield (P)

D. Durack 576

D. Droughtmaster cow

S. Calioran Adam (P)

S. Glenlands Oratorio (P)

D. Coorambulla Chickadee (P)

DAM: LAMONT 374 (P) D5

S. Vale View Magnum (P)

D. Lamont 149 (P)

D. Lamont 46 (P)

\$ _____

LOT 78 LAMONT 693 (POLL)

(HERD BULL)

Calved: **01.11.15 (24 MTHS)**Brand No. **693****SIRE: LAMONT EZE 417 (P)****DAM: LAMONT DROUGHTMASTER COW**

\$ _____

LOT 79 LAMONT 711 (POLL)

(HERD BULL)

Calved: **20.11.15 (24 MTHS)**Brand No. **711****SIRE: PUREBRED DROUGHTMASTER BULL****DAM: LAMONT DROUGHTMASTER COW**

\$ _____



LOT 80 LAMONT PRINCIPLE 610 (POLL)

I.D. NO. MAC16610M D5

Calved: **10.01.16 (22 MTHS)**Brand No. **610**

S. Swan Ironman

S. Calioran Adam (P)

D. Swan 98/289 (P)

SIRE: GLENLANDS ORATORIO (P) D5

S. Swan Crackerjack (P)

D. Coorambulla Chickadee (P)

D. Swan 1824 (P)

S. Glenavon Gimmick

S. Redskin Zulu (P)

D. Redskin 41/1 (P)

DAM: LAMONT 492 (P) D4

S. Yaralla Harley

D. Lamont Jessica (P)

D. Lamont 143 (P)

\$ _____

LOT 81 LAMONT 752 (POLL)

(HERD BULL)

Calved: **01.10.15 (25 MTHS)**Brand No. **752****SIRE: LAMONT EZE 416****DAM: LAMONT DROUGHTMASTER COW**

\$ _____

LOT 82 LAMONT 758 (POLL)

(HERD BULL)

Calved: **10.01.16 (22 MTHS)**Brand No. **758****SIRE: DURACK AUTHOR (S) D3****DAM: LAMONT DROUGHTMASTER COW**

\$ _____

LOT 83 VALLEY 1496 (POLL)

(HERD BULL)

Calved: **01.09.15 (26 MTHS)**Brand No. **1496****SIRE: VALLEY ZD1 779****DAM: PUREBRED VALLEY ZD1 COW**

Note: A good bodied, big upstanding bull. Long and well balanced.

\$ _____

LOT 84 VALLEY 1554 (POLL)

(HERD BULL)

Calved: **04.08.15 (27 MTHS)**Brand No. **1554****SIRE: PUREBRED VALLEY ZD1 SIRE****DAM: PUREBRED VALLEY ZD1 COW**

\$ _____

LOT 85 VALLEY 1522 (POLL)

(HERD BULL)

Calved: **15.09.15 (26 MTHS)**Brand No. **1522****SIRE: PUREBRED VALLEY ZD1 SIRE****DAM: PUREBRED VALLEY ZD1 COW**

\$ _____

LOT 86 VALLEY OXIDE 1474 (POLL)

I.D. NO. S1S161474M D2

Calved: **10.11.15 (24 MTHS)**Brand No. **1474**

S. Cungelella Foundation (P)

S. Glenlands Justice (P)

D. Glenlands 1108

SIRE: VALLEY GARRET (P) D5

S. Billabong Goliath (P)

D. Valley 531 (P)

D. Valley 377 (P)

S.

S. Droughtmaster bull

D.

DAM: VALLEY 0026 (P) D1

S.

D. Droughtmaster cow

D.

\$ _____

LOT 87 VALLEY OUNCE 1505 (POLL)

I.D. NO. S1S161505M D5

Calved: **20.09.15 (26 MTHS)**Brand No. **1505**

S. Glenlands Herald (P)

S. Glenlands D Lewis (P)

D. Glenlands D 00/123 (P)

SIRE: VALLEY HERO 836 (P) D5

S. Billabong Goliath (P)

D. Valley 531 (P)

D. Valley 377 (P)

S. Fairhaven 00/1 (P)

S. Fairhaven Dodge 127 (S)

D. De Grey Park 067 (P)

DAM: VALLEY 1297 (P) D5

S. RSVP Big Time (T) (S)

D. Valley 1078 (P)

D. Valley 746 (P)

\$ _____

LOT 88 VALLEY 1534 (POLL)

(HERD BULL)

Calved: **28.08.15 (27 MTHS)**Brand No. **1534****SIRE: VALLEY ZD1 947****DAM: PUREBRED VALLEY ZD1 COW**

\$ _____

LOT 89 VALLEY 1523 (SCURRS)

(HERD BULL)

Calved: **20.10.15 (25 MTHS)**Brand No. **1523****SIRE: RSVP BIG TIME (T) (S) D5****DAM: PUREBRED VALLEY ZD1 COW**

Note: This is a well made herd bull showing strong natural muscling, a good hindquarter and plenty of skin to indicate he'll develop his excellent beef credentials even further.

_____ \$ _____

LOT 90 VALLEY ORLANDO 1498 (POLL)

I.D. NO. S1S161498M D3

Calved: **01.10.15 (25 MTHS)**Brand No. **1498**

S. Glenlands Herald (P)

S. Glenlands D Lewis (P)

D. Glenlands D 00/123 (P)

SIRE: VALLEY HERO 836 (P) D5

S. Billabong Goliath (P)

D. Valley 531 (P)

D. Valley 377 (P)

S. Glenlands D Lewis (P)

S. Valley Happy Days (P)

D. Valley 603 (P)

DAM: VALLEY 1251 (P) D2

S. Droughtmaster bull

D. Valley 071 (P)

D. Droughtmaster cow

_____ \$ _____

LOT 91 VALLEY 1550 (POLL)

(HERD BULL)

Calved: **01.09.15 (26 MTHS)**Brand No. **1550****SIRE: PUREBRED VALLEY ZD1 SIRE****DAM: PUREBRED VALLEY ZD1 COW**

_____ \$ _____

LOT 92 VALLEY OZONE 1502 (SCURR)

I.D. NO. S1S161502M D5

Calved: **05.09.15 (26 MTHS)**Brand No. **1502**

S. Glenlands Herald (P)

S. Glenlands D Lewis (P)

D. Glenlands D 00/123 (P)

SIRE: VALLEY HERO 836 (P) D5

S. Billabong Goliath (P)

D. Valley 531 (P)

D. Valley 377 (P)

S. Minlacowie Millionaire (P)

S. Wingfield Boris (P)

D. Wingfield Beulah 3 (S)

DAM: VALLEY BOBBIN (P) D5

S. Garthowen Star (P)

D. Valley 264/0 (P)

D. Valley 993 (P)

_____ \$ _____

LOT 93 VALLEY 1501 (SCURRS)

(HERD BULL)

Calved: **30.10.15 (25 MTHS)**Brand No. **1501****SIRE: RSVP BIG TIME (T) (S) D5****DAM: PUREBRED VALLEY ZD1 COW**

Note: This 2yo exhibits natural thickness and softness of finish. An appealing commercial bull to get quality, easy doing, optimum, early weight progeny.

_____ \$ _____

LOT 94 VALLEY OATS 1499 (POLL)

I.D. NO. S1S161499M D5

Calved: **02.12.15 (23 MTHS)**Brand No. **1499**

S. Glenlands Herald (P)

S. Glenlands D Lewis (P)

D. Glenlands D 00/123 (P)

SIRE: VALLEY HERO 836 (P) D5

S. Billabong Goliath (P)

D. Valley 531 (P)

D. Valley 377 (P)

S. Glenlands Herald (P)

S. Glenlands D Lewis (P)

D. Glenlands D 00/123 (P)

DAM: VALLEY 833 (P) D5

S. Billabong Financial (P)

D. Valley 569 (P)

D. Valley 473 (P)

Note: A younger sire prospect of strong head and breed character, Oats carries a double cross of the Glenlands Lewis sire. He's deep and square bodied with most attractive softness of skin type.

_____ \$ _____

LOT 95 MUNGALLA 415 (POLL)

(HERD BULL)

Calved: **01.09.15 (26 MTHS)**Brand No. **415**

S. Mungalla Ringo (P)

SIRE: MUNGALLA VOID (P) D2

D. Mungalla 635 (P)

DAM: MUNGALLA 1998

Note: Eligible for D3 registration.

_____ \$ _____

LOT 96 MUNGALLA FAVOURITE 2499 (POLL)

I.D. NO. RMD162499M D3

Calved: **15.09.15 (26 MTHS)**Brand No. **2499**

S. Cungelella Islington (P)

S. Mungalla Natural (P)

D. Mungalla 839/5 (P)

SIRE: MUNGALLA CROWN (P) D5

S. Farnham Redman (P)

D. Mungalla Penny (P)

D. Mungalla 282 (P)

S. Cungelella Islington (P)

S. Mungalla Natural (P)

D. Mungalla 839/5 (P)

DAM: MUNGALLA 951 (P) D2

S. Droughtmaster bull

D. Mungalla 972 (P)

D. Droughtmaster cow

_____ \$ _____

LOT 97 MUNGALLA 2577 (POLL)
 (HERD BULL)
 Calved: **28.08.15 (27 MTHS)** Brand No. **2577**
 S. Mungalla Todman (P)
SIRE: MUNGALLA CLASSIC (P) D3
 D. Mungalla 1200 (P)

DAM: MUNGALLA 2282 (COMM)

Note: A long bodied bull with a great loin and topline, and a good head on him. Don't overlook him as there is potential in him that discerning bull buyers will see. Eligible for D2 registration.

_____ \$ _____

LOT 98 MUNGALLA 414 (POLL)
 (HERD BULL)
 Calved: **15.10.15 (25 MTHS)** Brand No. **414**
 S. Billabong Impressive (P)
SIRE: BILLABONG WARREGO 3504 (P) D5
 D. Billabong Goodluck (P)

DAM: MUNGALLA 2842 (COMM)

Note: A top performance herd bull for leading commercial breeders whichever way you look at him. His weight performance and tremendous carcass features will attract the attention of all cattle producers. Heavy natural muscle, the ideal smooth cover, lovely hindquarter, fullness of flank, overall thickness, as well as his attractive breed characteristics would see him fit into the best herds in the beef business and perform at the top level.

_____ \$ _____

LOT 99 MUNGALLA FINLAND 2446 (POLL)
 I.D. NO. RMD162446M D4
 Calved: **15.08.15 (27 MTHS)** Brand No. **2446**
 S. Farnham Redman (P)
 S. Mungalla Total (P)
 D. Farnham 199 (P)
SIRE: MUNGALLA COPPER (P) D5
 S. Bryvonlea Elisha (P)
 D. Mungalla Stella (P)
 D. Farnham 191 (P)

S. Mungalla Mistro (P)
 S. Mungalla Sunday (P)
 D. Mungalla 669 (P)
DAM: MUNGALLA 1231 (P) D3
 S. Farnham Redman (P)
 D. Mungalla 474 (P)
 D. Mungalla 289 (P)

_____ \$ _____

LOT 100 MUNGALLA FRANKO 2467 (POLL)
 I.D. NO. RMD162467M D5
 Calved: **01.09.15 (26 MTHS)** Brand No. **2467**
 S. Minlacowie Clairon 3186 (P)
 S. Kandanga Cassius (P)
 D. Greenacres Jessica Joy

SIRE: MUNGALLA ACE (P) D5
 S. Bryvonlea Elisha (P)
 D. Mungalla 586 (P)
 D. Mungalla 615 (P)

S. Minlacowie Clairon 3186 (P)
 S. Kandanga Cassius (P)
 D. Greenacres Jessica Joy
DAM: MUNGALLA 563 (P) D5
 S. Billabong Jefferson (P)
 D. Mungalla 452 (P)
 D. Mungalla 363 (P)

_____ \$ _____

LOT 101 MUNGALLA FOXWOOD 2473 (POLL)
 I.D. NO. RMD162473M D5
 Calved: **01.09.15 (26 MTHS)** Brand No. **2473**
 S. Minlacowie Clairon 3186 (P)
 S. Kandanga Cassius (P)
 D. Greenacres Jessica Joy

SIRE: MUNGALLA ACE (P) D5
 S. Bryvonlea Elisha (P)
 D. Mungalla 586 (P)
 D. Mungalla 615 (P)

S. Farnham Redman (P)
 S. Mungalla Tempo (P)
 D. Mungalla 452 (P)
DAM: MUNGALLA 1340 (P) D5
 S. Billabong Influential (S)
 D. Mungalla 457 (P)
 D. Mungalla 985

Note: Foxwood is a medium frame bull backed by an excellent pedigree. He's long, all muscle mass and shows strong virility.

_____ \$ _____

LOT 102 MUNGALLA 2572 (POLL)
 (HERD BULL)
 Calved: **01.09.15 (26 MTHS)** Brand No. **2572**
 S. Mungalla Trivia (P)
SIRE: MUNGALLA CAPTAIN (P) D3
 D. Mungalla 1034 (P)

DAM: MUNGALLA 2249 (COMM)

Note: Eligible for D2 registration.

_____ \$ _____

**PLEASE LODGE YOUR COMPLETED BUYERS INSTRUCTIONS SHEET
 WHEN YOU HAVE FINALISED YOUR PURCHASES!**

LOT 103 MUNGALLA FORD 2448 (POLL)

I.D. NO. RMD162448M D5

Calved: **15.10.15 (25 MTHS)**Brand No. **2448**

S. Farnham Redman (P)
S. Mungalla Total (P)
D. Farnham 199 (P)

SIRE: MUNGALLA COPPER (P) D5

S. Bryvonlea Elisha (P)
D. Mungalla Stella (P)
D. Farnham 191 (P)

S. Janidon Pharaoh (P)
S. Farnham Redman (P)
D. Farnham 056 (P)

DAM: MUNGALLA 885 (P) D5

S. Pine Valley 1566 (P)
D. Farnham 199 (P)
D. Valley 052 (P)

\$ _____

LOT 104 MUNGALLA FRIENDLY 2593 (POLL)

I.D. NO. RMD162593M D4

Calved: **29.11.15 (24 MTHS)**Brand No. **2593**

S. Mungalla Natural (P)
S. Mungalla Todman (P)
D. Mungalla 072 (P)

SIRE: MUNGALLA CLASSIC (P) D3

S. Wolfgang Flange (P)
D. Mungalla 1200 (P)
D. Mungalla 737 (P)

S. Kandanga Cassius (P)
S. Mungalla Ace (P)
D. Mungalla 586 (P)

DAM: MUNGALLA 2133 (P) D5

S. Farnham Redman (P)
D. Mungalla Vienna
D. Mungalla 339 (P)

\$ _____

LOT 105 MUNGALLA FOOTLOOSE 2482 (POLL)

I.D. NO. RMD162482M D5

Calved: **15.11.15 (24 MTHS)**Brand No. **2482**

S. Minlacowie Clairon 3186 (P)
S. Kandanga Cassius (P)
D. Greenacres Jessica Joy

SIRE: MUNGALLA ACE (P) D5

S. Bryvonlea Elisha (P)
D. Mungalla 586 (P)
D. Mungalla 615 (P)

S. Minlacowie Clairon 3186 (P)
S. Kandanga Cassius (P)
D. Greenacres Jessica Joy

DAM: MUNGALLA 1249 (P) D5

S. Bryvonlea Elisha (P)
D. Mungalla Stella (P)
D. Farnham 191 (P)

\$ _____

LOT 106 MUNGALLA FREEHOLD 2576 (POLL)

I.D. NO. RMD162576M D2

Calved: **07.09.15 (26 MTHS)**Brand No. **2576**

S. Mungalla Natural (P)
S. Mungalla Todman (P)
D. Mungalla 072 (P)

SIRE: MUNGALLA CLASSIC (P) D3

S. Wolfgang Flange (P)
D. Mungalla 1200 (P)
D. Mungalla 737 (P)

S.
S. Droughtmaster bull
D.

DAM: MUNGALLA 2586 (P) D1

S.
D. Droughtmaster cow
D.

LOT 107 MUNGALLA FORMAL 2536 (POLL)

I.D. NO. RMD162536M D2

Calved: **15.09.15 (26 MTHS)**Brand No. **2536**

S. Janidon Pharaoh (P)
S. Farnham Redman (P)
D. Farnham 056 (P)

SIRE: MUNGALLA TOTAL (P) D5

S. Pine Valley 1566 (P)
D. Farnham 199 (P)
D. Valley 052 (P)

S.
S. Droughtmaster bull
D.

DAM: MUNGALLA 1535 (P) D1

S.
D. Droughtmaster cow
D.

LOT 108 MUNGALLA FREESTYLE 2411 (POLL)

I.D. NO. RMD162411M D5

Calved: **08.10.15 (25 MTHS)**Brand No. **2411**

S. Farnham Redman (P)
S. Mungalla Tempo (P)
D. Mungalla 452 (P)

SIRE: MUNGALLA CONMAN (P) D5

S. Hamadra Cody (S)
D. Mungalla 839 (P)
D. Mungalla 106 (P)

S. Minlacowie Encounter 3455
S. Wolfgang Flange (P)
D. Tiggabon 411

DAM: MUNGALLA 1035 (P) D5

S. Bryvonlea Elisha (P)
D. Mungalla Sylvia (P)
D. Mungalla 363 (P)

\$ _____

LOT 109 MUNGALLA FIFITA 2537 (POLL)

I.D. NO. RMD162537M D2

Calved: **15.10.15 (25 MTHS)**Brand No. **2537**

S. Janidon Pharaoh (P)

S. Farnham Redman (P)

D. Farnham 056 (P)

SIRE: MUNGALLA TOTAL (P) D5

S. Pine Valley 1566 (P)

D. Farnham 199 (P)

D. Valley 052 (P)

S.

S. Droughtmaster bull

D.

DAM: MUNGALLA 982 (P) D1

S.

D. Droughtmaster cow

D.

\$

LOT 110 MUNGALLA FLAME 2496 (POLL)

I.D. NO. RMD162496M D3

Calved: **01.10.15 (25 MTHS)**Brand No. **2496**

S. Mungalla Outback (P)

S. Mungalla Trivia (P)

D. Mungalla 701 (P)

SIRE: MUNGALLA CAPTAIN (P) D3

S. Wolfgang Flange (P)

D. Mungalla 1034 (P)

D. Mungalla 565 (P)

S. Kandanga Cassius (P)

S. Mungalla Wickham (P)

D. Mungalla 452 (P)

DAM: MUNGALLA 1792 (P) D2

S. Droughtmaster bull

D. Mungalla 1719 (P)

D. Droughtmaster cow

\$

LOT 111 MUNGALLA FLAGSHIP 2563 (POLL)

I.D. NO. RMD162563M D3

Calved: **15.09.15 (26 MTHS)**Brand No. **2563**

S. Mungalla Niles (P)

S. Mungalla Ringo (P)

D. Farnham 163 (P)

SIRE: MUNGALLA VALVE (P) D2

S. Droughtmaster bull

D. Mungalla 619 (P)

D. Droughtmaster cow

S. Mungalla Ringo (P)

S. Mungalla Vegas (P)

D. Mungalla 626 (P)

DAM: MUNGALLA 1628 (P) D2

S. Droughtmaster bull

D. Mungalla 961 (P)

D. Droughtmaster cow

\$

LOT 112 VALLEY 1515 (SCURRS)

(HERD BULL)

Calved: **01.09.15 (26 MTHS)**Brand No. **1515****SIRE: VALLEY ZD1 660****DAM: PUREBRED VALLEY ZD1 COW**

Note: Leading commercial producers looking for optimum carcass values should inspect this 'ready for work' bull. He has good growth, ample muscling, beautiful ribeye, a deep full flank and the natural finish required for 'top of the grid' premiums.

\$

LOT 113 VALLEY 1511 (POLL)

(HERD BULL)

Calved: **01.09.15 (26 MTHS)**Brand No. **1511****SIRE: VALLEY ZD1 660****DAM: PUREBRED VALLEY ZD1 COW**

\$

LOT 114 VALLEY OSBORN 1500 (POLL)

I.D. NO. S1S161500M D5

Calved: **01.09.15 (26 MTHS)**Brand No. **1500**

S. Glenlands Herald (P)

S. Glenlands D Lewis (P)

D. Glenlands D 00/123 (P)

SIRE: VALLEY HERO 836 (P) D5

S. Billabong Goliath (P)

D. Valley 531 (P)

D. Valley 377 (P)

S. Glenlands Herald (P)

S. Glenlands D Lewis (P)

D. Glenlands D 00/123 (P)

DAM: VALLEY 825 (P) D5

S. Huntly Doctor (S)

D. Valley Delight (P)

D. Valley 465 (P)

Note: Hero has produced a quality young sire prospect in Osborn. We like his strong head and breed quality, big body volume, excellent muscle expression, soft smooth coverage and big square hindquarter. A stylish type backed by pedigree power.

\$

Log on to
elitelivestockauctions.com.au
for

**LIVE AUCTION
LIVE VIEWING
LIVE BIDDING**

LOT 115 VALLEY OVINE 1469 (SCURRS)

I.D. NO. S1S161469M D3

Calved: **30.08.15 (27 MTHS)**Brand No. **1469**

S. Cungelella Foundation (P)

S. Glenlands Justice (P)

D. Glenlands 1108

SIRE: VALLEY GARRET (P) D5

S. Billabong Goliath (P)

D. Valley 531 (P)

D. Valley 377 (P)

S. Glenlands D Lewis (P)

S. Valley Hero 836 (P)

D. Valley 531 (P)

DAM: VALLEY 1320 (P) D2

S. Droughtmaster bull

D. Valley 1085 (P)

D. Droughtmaster cow

\$

LOT 116 VALLEY 1484 (POLL)

(HERD BULL)

Calved: **02.09.15 (26 MTHS)**Brand No. **1484****SIRE: PUREBRED VALLEY ZD1 SIRE****DAM: PUREBRED VALLEY ZD1 COW**

\$

LOT 117 LAMONT 741 (POLL)

(HERD BULL – RED BRAHMAN X)

Calved: **08.10.15 (25 MTHS)**Brand No. **741****SIRE: LANCEFIELD D WINSLOW (P)****DAM: LAMONT DROUGHTMASTER COW**

\$

LOT 118 LAMONT 755 (SCURRS)

(HERD BULL)

Calved: **15.09.15 (26 MTHS)**Brand No. **755****SIRE: PUREBRED DROUGHTMASTER BULL****DAM: LAMONT DROUGHTMASTER COW**

\$

LOT 119 LAMONT 713 (HORN)

(HERD BULL)

Calved: **10.10.15 (25 MTHS)**Brand No. **713****SIRE: LAMONT INFLUX (S) D2****DAM: LAMONT DROUGHTMASTER COW**

\$

LOT 120 LAMONT 715 (POLL)

(HERD BULL)

Calved: **12.10.15 (25 MTHS)**Brand No. **715****SIRE: DURACK AUSSIE (P) D3****DAM: LAMONT DROUGHTMASTER COW**

\$

LOT 121 LAMONT 735 (POLL)

(HERD BULL)

Calved: **20.09.15 (26 MTHS)**Brand No. **735****SIRE: LAMONT EZE 357 (P)****DAM: LAMONT DROUGHTMASTER COW**

\$

LOT 122 LAMONT 773 (HORN)

(HERD BULL)

Calved: **01.11.15 (24 MTHS)**Brand No. **773****SIRE: LAMONT EZE 416****DAM: LAMONT DROUGHTMASTER COW**

\$

LOT 123 NO LOT**LOT 124 LAMONT 740 (POLL)**

(HERD BULL – RED BRAHMAN X)

Calved: **01.10.15 (25 MTHS)**Brand No. **740****SIRE: LANCEFIELD D WINSLOW (P)****DAM: LAMONT DROUGHTMASTER COW**

\$

LOT 125 VALLEY 1539 (POLL)

(HERD BULL)

Calved: **30.09.15 (26 MTHS)**Brand No. **1539****SIRE: VALLEY ZD1 660****DAM: PUREBRED VALLEY ZD1 COW**

\$

LOT 126 VALLEY 1506 (POLL)

(HERD BULL)

Calved: **01.10.15 (25 MTHS)**Brand No. **1506****SIRE: VALLEY ZD1 779****DAM: PUREBRED VALLEY ZD1 COW**

\$

LOT 127 VALLEY 1519 (POLL)

(HERD BULL)

Calved: **25.08.15 (27 MTHS)**Brand No. **1519****SIRE: VALLEY ZD1 660****DAM: PUREBRED VALLEY ZD1 COW**

_____ \$ _____

LOT 128 VALLEY 1509 (POLL)

(HERD BULL)

Calved: **01.10.15 (25 MTHS)**Brand No. **1509****SIRE: VALLEY LLOYD 1265 D2****DAM: PUREBRED VALLEY ZD1 COW**

_____ \$ _____

LOT 129 VALLEY 1502 (POLL)

(HERD BULL)

Calved: **30.09.15 (26 MTHS)**Brand No. **1502****SIRE: VALLEY ZD1 814****DAM: PUREBRED VALLEY ZD1 COW**

_____ \$ _____

LOT 130 VALLEY 1497 (POLL)

(HERD BULL)

Calved: **28.10.15 (25 MTHS)**Brand No. **1497****SIRE: VALLEY ZD1 814****DAM: PUREBRED VALLEY ZD1 COW**

_____ \$ _____

LOT 131 VALLEY 1536 (POLL)

(HERD BULL)

Calved: **20.10.15 (25 MTHS)**Brand No. **1536****SIRE: RSVP BIG TIME (T) (S) D5****DAM: PUREBRED VALLEY ZD1 COW**

_____ \$ _____

LOT 132 VALLEY 1547 (POLL)

(HERD BULL)

Calved: **15.10.15 (25 MTHS)**Brand No. **1547****SIRE: VALLEY ZD1 947****DAM: PUREBRED VALLEY ZD1 COW**

_____ \$ _____

LOT 133 VALLEY 1491 (POLL)

(HERD BULL)

Calved: **02.10.15 (25 MTHS)**Brand No. **1491****SIRE: PUREBRED VALLEY ZD1 SIRE****DAM: PUREBRED VALLEY ZD1 COW**

_____ \$ _____

LOT 134 VALLEY 1537 (POLL)

(HERD BULL)

Calved: **15.10.15 (25 MTHS)**Brand No. **1537****SIRE: VALLEY ZD1 814****DAM: PUREBRED VALLEY ZD1 COW**

_____ \$ _____

LOT 135 VALLEY 1517 (SCURRS)

(HERD BULL)

Calved: **10.09.15 (26 MTHS)**Brand No. **1517****SIRE: VALLEY ZD1 660****DAM: PUREBRED VALLEY ZD1 COW**

_____ \$ _____

LOT 136 VALLEY 1504 (POLL)

(HERD BULL)

Calved: **10.09.15 (26 MTHS)**Brand No. **1504****SIRE: VALLEY LLOYD 1265 D2****DAM: PUREBRED VALLEY ZD1 COW**

_____ \$ _____

LOT 137 VALLEY 1487 (POLL)

(HERD BULL)

Calved: **15.09.15 (26 MTHS)**Brand No. **1487****SIRE: PUREBRED VALLEY ZD1 SIRE****DAM: PUREBRED VALLEY ZD1 COW**

_____ \$ _____

LOT 138 VALLEY 1518 (POLL)

(HERD BULL)

Calved: **20.09.15 (26 MTHS)**Brand No. **1518****SIRE: VALLEY LLOYD 1265 D2****DAM: PUREBRED VALLEY ZD1 COW**

_____ \$ _____

8 CHAROLAIS X DROUGHTMASTER BULLS

LOT 139 LAMONT 700 (SCURRS)

(HERD BULL – CHAROLAIS X)

Calved: **08.09.15 (26 MTHS)**

Brand No. **700**

SIRE: MOONGOOL E395 (P)

DAM: LAMONT DROUGHTMASTER COW

Note: Exceptional carcass values in this lead bull in the Charolais X section. His combination of length, spring of rib, beautiful hindquarter and full deep flank is what progressive beef producers are searching for to get the easy doing steers for the premium markets. A lovely softness of finish and great skin on him as well.

_____ \$ _____

LOT 140 LAMONT 687 (HORN)

(HERD BULL – CHAROLAIS X)

Calved: **01.10.15 (25 MTHS)**

Brand No. **687**

SIRE: MOONGOOL CHAROLAIS BULL

DAM: LAMONT DROUGHTMASTER COW

Note: Big body volume, optimum muscling, deep square and broad hindquarter and again, easy doing softness are features of this fellow.

_____ \$ _____

LOT 141 LAMONT 717 (SCURRS)

(HERD BULL – CHAROLAIS X)

Calved: **02.10.15 (25 MTHS)**

Brand No. **717**

SIRE: MOONGOOL CHAROLAIS BULL

DAM: LAMONT DROUGHTMASTER COW

Note: There's extra length and strong natural beef performance in this bull. A masculine type with a lot of meat on him.

_____ \$ _____

LOT 142 LAMONT 712 (HORN)

(HERD BULL – CHAROLAIS X)

Calved: **18.10.15 (25 MTHS)**

Brand No. **712**

SIRE: MOONGOOL ELDORADO

DAM: LAMONT DROUGHTMASTER COW

_____ \$ _____

LOT 143 LAMONT 704 (SCURRS)

(HERD BULL – CHAROLAIS X)

Calved: **09.09.15 (26 MTHS)**

Brand No. **704**

SIRE: MOONGOOL ELDORADO

DAM: LAMONT DROUGHTMASTER COW

_____ \$ _____

LOT 144 LAMONT 689 (SCURRS)

(HERD BULL – CHAROLAIS X)

Calved: **15.10.15 (25 MTHS)**

Brand No. **689**

SIRE: MOONGOOL CHAROLAIS BULL

DAM: LAMONT DROUGHTMASTER COW

_____ \$ _____

LOT 145 MUNGALLA 418 (POLL)

(HERD BULL – CHAROLAIS X)

Calved: **01.10.15 (25 MTHS)**

Brand No. **418**

S. Billabong Impressive (P)

SIRE: BILLABONG WARREGO 3504 (P) D5

D. Billabong Goodluck (P)

DAM: MUNGALLA 2303 (COMM)

Note: Excellent quality young bull, showing outstanding natural beef performance. Abundant muscling, ample length, soundness of structure, softness of finish and eye catching overall carcass qualities.

_____ \$ _____

LOT 146 MUNGALLA 401 (POLL)

(HERD BULL – CHAROLAIS X)

Calved: **15.10.15 (25 MTHS)**

Brand No. **401**

S. Billabong Impressive (P)

SIRE: BILLABONG WARREGO 3504 (P) D5

D. Billabong Goodluck (P)

DAM: MUNGALLA 867 (COMM)

_____ \$ _____

MAGS

Monty Atkinson Genetic Sale



2017 SALE RESULTS

NO.	DESCRIPTION	GROSS	AVERAGE	TOP
	Registered Sires			
	Herd Bulls			
	Charolais X Droughtmaster Bulls			
	TOTAL	\$	\$	\$

Buyers Note

When you have completed your purchases please proceed to the Sale delivery office and submit your written Buyers Instruction Sheet.

Thank You

We Thank You for attending our Sale and your interest in our cattle.
We extend our best wishes for good seasons, continued buoyant cattle markets,
and for successful results from your MAGS purchases at this Sale.

STUD STOCK — AUCTION TERMS AND CONDITIONS OF SALE

IMPORTANT NOTICE: All bids shall be treated as offers made upon the following Terms and Conditions of Sale and all persons present are admitted to attend the sale on the basis that they have notice of these Terms and Conditions.

1. The highest bidder shall, subject to Condition 2, be the Purchaser provided that the Vendor reserves the right to bid either by himself or through his Agent or Auctioneer and should any dispute arise among the bidders for any lot, during or immediately after the sale of the lot, it shall be settled at the Auctioneer's absolute discretion who may, should one of the disputants advance, put the lot or lots up again. The bidding from time to time shall be regulated by the Auctioneer and no bid shall be retracted.
2. The sale will be conducted on a "Sale" or "No Sale" basis whereby the lot for sale shall be knocked down to the highest bidder, but the sale will be subject to the acceptance of the highest bid by the Vendor who will immediately after the fall of the hammer declare "Sale" or "No Sale". Should the Vendor reject the bid of the highest bidder such bidder will have the right of first refusal of the lot at the Vendor's nominated price for one hour after the lot has been passed out of the ring on the Terms and Conditions herein set forth in so far as they shall apply.
3. The details of the Purchaser, the purchase price and the lot sold as recorded by the sale clerk for and on behalf of the Auctioneer shall be equally binding on both Purchaser and Vendor.
4. The Auctioneer expressly reserves the right, without giving any reasons therefore, to:
 - (a) Refuse to acknowledge any bid;
 - (b) Withdraw any lot or lots before or during the sale;
 - (c) Exclude any person from the auction venue should it think fit.
5. Each lot in all cases shall be at the risk and expense of the Purchaser upon acceptance of his bid by the Vendor or upon acceptance of the highest bidder's offer by the Vendor whichever shall be the earlier.
6. Except as expressly provided in these Terms and Conditions of Sale no guarantee or warranty shall be given in respect of any lot sold under these Conditions as to pedigree, sex, age, breeding condition or otherwise howsoever, and no guarantee, warranty or condition whatsoever shall be implied from any affirmation made before or at the time of the sale, or from any circumstances of the sale, but in all cases where a guarantee is intended the same shall attach and be enforceable only if reduced to writing before delivery of the lot and signed by the Vendor or by the Auctioneer acting as agent for the Vendor, and the absence of such writing shall be conclusive evidence in case of dispute that no guarantee, warranty or condition whatsoever was given or implied.
7. In the event of any dispute in respect to the sale of any lot:
 - (i) The Purchaser shall nevertheless be obliged to pay to the Auctioneer the full purchase price and any other monies or interest payable by the Purchaser in accordance with these terms and conditions;
 - (ii) The Vendor and the Purchaser shall resolve the dispute between themselves;
 - (iii) The Auctioneer shall have no liability or responsibility in regard to the dispute; and
 - (iv) No lot shall be returned to the Auctioneer and the Purchaser shall indemnify the Auctioneer for all costs, expenses and damages which the Auctioneer is put to or incurs by reason of the Purchaser so doing.
8. The name of the Vendor for whom the Auctioneer acts is acknowledged to have been furnished to Purchasers prior to the sale and further particulars will in all cases be furnished to a Purchaser if required. In the case of any disputes the remedy of the Purchaser shall be against the Vendor only and in no case or under any circumstances against the Auctioneer who is to be regarded for all intents and purposes as agent for a disclosed principal.
9. (a) PAYMENT – Unless prior credit arrangements have been made in writing with the Auctioneer the full purchase price for each lot shall be due and payable to the Auctioneer in cash upon acceptance of the highest bid or the highest bidder's offer by the Vendor and prior to delivery. Notwithstanding that delivery is given to or possession obtained by the purchaser or his representative prior to the payment of the purchase money in full the property in any lot which is sold shall not pass to the Purchaser until the full purchase price and all cheques, promissory notes, bills of exchange, acceptance orders or drafts given in connection with such payment have been paid and liquidated, and until property shall pass, the Purchaser shall hold such lot as bailee, provided that in all cases should such payment not have been made and liquidated within 14 days of the date of the sale the Auctioneer reserves the right to:—
 - (i) Rescind the contract on behalf of the Vendor and repossess and resell any lot;
 - (ii) Recover from the Purchaser interest upon the purchase price at a rate per annum which aggregates the AMBA Bill Rate plus two percentum. For the purposes of this condition, the expression "the AMBA Bill Rate" is the rate published by the Australian Merchant Bankers Association in good faith as at the date of the sale as its bill rate for 180 day bills of exchange expressed as a percentage per annum. If at any time the AMBA Bill Rate becomes unavailable for any reason, the Auctioneer shall determine and advise the Purchaser of the interest rate to apply for the purposes of this condition.
- (b) The Auctioneer is selling as the del credere agent of the Vendor and the full purchase price of any lot sold shall be payable by the Purchaser to the Auctioneer and be fully recoverable by the Auctioneer in its own name.
10. If the Purchaser shall neglect or fail to comply with any of the within conditions, any lot purchased by him may be immediately resold by public auction or private contract, with or without notice, at the risk of the former Purchaser, who will be held responsible for all loss and expenses arising out of such resale, and shall not participate in any profit accruing therefrom.
11. Any Vendor or Purchaser removing the sale number from any lot after it has been sold will fully indemnify all affected parties for any loss, costs or damage should the lot be wrongly delivered.
12. The Purchasers, if any more than one, shall be jointly and severally bound by these Terms and Conditions, and shall jointly and severally carry out and perform same.
13. Any person who advances a bid on a lot shall do so on the expressed condition and understanding that should that person's bid be the highest bid and such bid is accepted by the Vendor, then that person will be held personally liable for the price so agreed upon, regardless of the fact that that person may be acting on behalf of another party, either disclosed or undisclosed to the Vendor or Auctioneer, provided however, that this Condition shall not in any way negate the Vendor's right to claim against any principal and in such case the bidder's liability shall be construed to be by way of guarantee.
14. The Auctioneer may, should it think fit, make arrangements on a Purchaser's behalf for the feeding, watering, trucking, shipping of and general attendance to any lot after sale but no responsibility will be accepted by the Auctioneer and all such service will be at the Purchaser's risk and expense.
15. No lot will be delivered until the sales invoice has been checked and signed by the Purchaser or his duly authorised representative.
16. (a) Each lot in all cases shall be sold with all faults, if any, and excepting those conditions and warranties implied by the Trade Practices Act or any applicable State legislation which cannot be contractually excluded and excepting conditions and warranties expressly contained in these Terms and Conditions of Sale, any express or implied condition, statement of warranty, statutory or otherwise, is hereby excluded. The Auctioneer is not liable in respect of any error, misdescription or omission in any particulars appearing or stated regarding the description of pedigrees of any lot offered for sale and no such error, misdescription or omission shall entitle the Purchaser to annul the sale or reject the lot or claim any compensation, damage or abatement in price.
- (b) Each lot will be sold subject to passing all veterinary tests required by the law of the state or country to which the Purchaser intends to transport that particular lot, such tests to be undertaken at the Purchaser's expense and concluded immediately following the sale. In the event of a lot failing to pass these tests, the sale shall be null and void, any purchase moneys paid by the Purchaser shall be refunded and property in the lot shall revert to or remain with the Vendor.
17. Guarantees of Fertility:—
 - (1) BULLS - Save and except for calves at foot, all bulls are guaranteed breeders and to so prove by the later of:
 - (a) six months after the date of sale or
 - (b) the animal reaching the age of 24 months
 - (2) FEMALES - Save and except for female calves at foot, all females are guaranteed to be in calf or go into calf by the later of:
 - (a) 6 months of the date of sale
 - (b) the animal reaching the age of 30 monthsA positive pregnancy test certified by a qualified veterinary surgeon shall be sufficient evidence that the animal is in calf.
 - (3) Claims under Clauses 17(1) and 17(2). A claim that an animal has failed to satisfy a guarantee of fertility under Clause 17(1) or 17(2) must be made to the Vendor within the relevant guarantee period but prior to the animal entering a quarantine area other than on the Vendor's property.
 - (a) All claims must be accompanied by a certificate from a registered veterinarian surgeon in accordance with the guidelines established by the Australian Association of Cattle Veterinarians which must clearly identify the basis of the claim.
 - (b) Subject to Clause 17(9), infertility resulting from injury or disease occurring after the sale of the animal is not covered by this guarantee.
 - (c) The Vendor retains the right to have the animal placed on a property nominated by him or returned to his own property for further assessment of fertility for a period not exceeding six months. If the animal proves fertile within the period such status must be confirmed by a certificate issued by a registered veterinary surgeon in accordance with the guideline established by the Australian Association of Cattle Veterinarians and costs incurred must be borne by the Purchaser. If the animal is not proven fertile within the period, the costs incurred must be borne by the Vendor.
 - (4) LIABILITY OF A VENDOR - Except for costs defined elsewhere in the conditions of sale, the liability of a Vendor in respect of claims relating to fertility shall not exceed the purchase price of the animal(s) or provide mutually agreed upon replacement animal(s).
 - (5) In the event of a claim being substantiated:
 - (a) The purchase price shall be refunded within 14 days unless a mutually agreed upon replacement animal has been provided.
 - (b) The animal/s which are the subject of the claim and any stocks of stored semen shall automatically become the property of the Vendor and be returned to him or disposed of according to his instruction at his expense.
 - (6) Subject to Clause 17(9), this guarantee is of no effect if:
 - (a) The animal is returned to the Vendor.
 - (i) In poor physical condition or with any injury;
 - (ii) Tests carried out on behalf of the Vendor within fourteen days of such return proved positive to any diseases which may affect the animal's fertility or ability to breed naturally; or
 - (b) The Purchaser has collected and stored embryos from a female.
 - (7) In the event of a dispute as to whether a lot is a breeder, such dispute shall be resolved by the Vendor and the Purchaser. The Auctioneer, while he will use his best endeavours to assist, shall have no liability or responsibility in that regard. If an animal is alleged or proved not to be a breeder, the Purchaser must nevertheless pay the Auctioneer the full purchase price and any other monies or interest payable by the Purchaser in accordance with these Terms and Conditions.
 - (8) EVIDENCE OF FERTILITY – A Certificate issued by a registered veterinary surgeon at or before the time of sale than an animal is fertile (unless it is a certificate stating in respect of a female that she is in calf at the time of sale) does not, of itself, satisfy or discharge the Vendor's obligations under the guarantee of fertility given under this Clause 17. All animals, except calves at foot, must prove their fertility within the relevant guarantee period.
 - (9) RELIEF FROM GUARANTEE – If the Vendor seeks to be relieved from the obligations which would otherwise be imposed upon him by this clause by virtue of Clauses 17(3)(b) or 17(6)(a), the onus of proof is upon the Vendor to establish that:
 - (a) The animal suffered the injury or disease or is in poor physical condition due to circumstances and events occurring after the sale, and
 - (b) The injury, disease of physical condition is the sole cause of the animal's infertility or failure to prove fertility within the guarantee period.
 - (10) DEFINITION – For the purpose of this Clause 17, the expression "guarantee period" means:
 - (a) in relation to bulls – the period specified in Clause 17(1) as being the period in which the bull must prove his fertility; and
 - (b) in relation to females – the period specified in Clause 17(2) as being the period in which the female must go into calf.
18. (a) Each lot shall be at the risk of the Vendor in respect of any damage or injury, whether by disease, accident or otherwise, or whether caused by the negligence of the Auctioneer for the period that the lot be in the custody of the Auctioneer, unless such lots shall have been sold in which latter case such lot shall be at the risk of the Purchaser in all such respects.
- (b) If any Vendor brings to the sale premises any lot which is dangerous, or infected with any disease, that Vendor shall be liable for all injury, damages, costs, losses or expenses which the Auctioneer may sustain, incur or be put to either directly or indirectly as a result of the Vendor so doing. The Auctioneer reserves the right, at its absolute discretion, to exclude from the sale, or put out of the sale venue or dispose of, any lot which in its opinion shows signs of any disease, whether infectious, contagious or not, or of any serious fault or of being dangerous.
19. DELIVERY — Except at the discretion of the Auctioneer no lot shall be delivered to the Purchaser unless payment of the purchase money together with any additional charges incurred including those expenses incurred by the Auctioneer pursuant to Condition 14 hereof, is first made by the Purchaser to the Auctioneer. Release of lots may be withheld by the Auctioneer until personal cheques are cleared.
20. In these Conditions:—
 - (a) References to "Auctioneer" shall be taken to mean as the context so admits, the Selling Agent or any member, subsidiary or related corporation or body, officer, agent or employee thereof, authorised by the Vendor to conduct the sale of the lot;
 - (b) "Purchaser" shall have the meaning ascribed to it in Condition 1;
 - (c) "Vendor" shall mean the person or corporation upon whose account lots are offered for sale and where a stud or farm is named shall mean the proprietor of that stud or farm;
 - (d) "Lot" shall be taken to mean the animal offered for sale and/or sold by the Auctioneer on behalf of a Vendor.

IMPORTANT NOTICE

The Selling Agent, its members, subsidiary or related corporations, officers, agents, and employees for themselves and for those for whom they act while exercising due care provide all information without responsibility and give no guarantee whatsoever as to its accuracy.

All persons who attend the Sale do so entirely at their risk and the Selling Agent, its members, subsidiary or related corporations, officers, agents, employees and its principals, for themselves and for those for whom they act, do not assume or accept any responsibility or liability of whatever nature for any injury or damage whatsoever which may occur.

BUYERS INSTRUCTION SHEET 2017

MAGS
Monty Atkinson Genetic Sale



BID CARD NO _____

PIC NO

<input type="text"/>	<input type="text"/>	<input type="text"/>	<input type="text"/>	<input type="text"/>	<input type="text"/>	<input type="text"/>	<input type="text"/>
----------------------	----------------------	----------------------	----------------------	----------------------	----------------------	----------------------	----------------------

Name _____

Address _____

_____ Postcode _____

Phone _____ Fax _____

Mobile _____

Lots Purchased _____

Total No. of Bulls Purchased _____

Delivery: Owners Transport ☐ Carrier ☐ _____

Destination _____

Is Insurance Required: Yes ☐ No ☐

STATE PERIOD _____

Dipping Instructions: ☐ Dipping Not Required

☐ Dip and Clear

☐ Dip Only

FEEDING REQUIRED: Yes ☐ No ☐

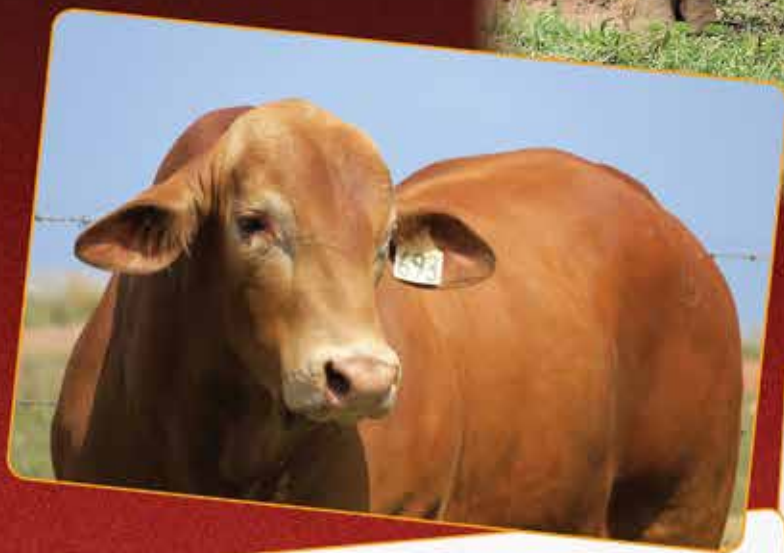
INVOICE TO _____

Buyers Signature _____

Date _____

IS REGISTRATION TRANSFER REQUIRED? Yes ☐ No ☐

If yes, name and address for transfer of registration:





Manufacturers & suppliers of all
beef cattle stockfeed rations & supplements

// **STUD CATTLE RATIONS**
MASH & PELLETIZED
Bulk & bagged options

// **MOLASSES BASED SUPPLEMENTS**
Tank & trough deliveries & depot pickup

// **PROTEIN MEAL CONCENTRATES**
Grain, silage & molasses

// **TURBO POWER MOLASSES RATION**
Grain based molasses supplement, paddock deliveries

// **DRY LICK SUPPLEMENTS**
Stock & customized options available

Servicing Queensland and the Northern Territory

Rural Supplements are proud Sponsors of the
MAGS Droughtmaster Sale 2017.



Gracemere Feed Mill 1300 272 545
Biloela Feed Mill 07 4992 6777

Barry Williams 0409 503 123 Brent Williams 0429 340 349
Basil Pratt Sales & Nutrition 0427 647 187
mill@ruralsupplements.com PO Box 91 Gracemere Q 4702

ruralsupplements.com